



**RENAULT ESPACE: 1KRL917**

Vinnumber:	<b>VF1RFC00753154751</b>	Versionname:	
First Registrationdate:	<b>17/06/2015</b>	Fiscalpower:	
Expertise Mileage:	<b>111116</b>	Power Kw:	<b>96</b>
Bodytype:	<b>SUV</b>	Body color:	<b>Gold</b>
Gearbox:	<b>MAN 6 VIT</b>	Paint type:	<b>Metalic</b>
Transmission:		Rims summer:	<b>Aluminium</b>
Fueltype:	<b>Diesel</b>	Oil level:	<b>OK</b>
Battery functioning:	<b>Yes</b>	Parking lot:	<b>3706</b>
Number of doors:	<b>5</b>		
Number of seats:	<b>5</b>		
Number head rests:	<b>5</b>		
Rims summer:	<b>Aluminium</b>		
Category:	<b>Passenger Car</b>		
Oil level:	<b>OK</b>		
Registration Certificate Car (BE):	<b>Yes</b>		

**Options**

Windows electric F	Seats electric F L
Windows electric R	Panoramic roof
Cruise Control	Central consol F
Steering wheel multifunctional	Luggage cover
Seats F heated	Front parking sensors
Radio multimedia	Rear parking sensors
Type of headlighting	<b>Headlighting LED</b>
Type of GPS	<b>GPS big screen color</b>
Type of Lining	<b>Lining leather</b>
Type of climate control	<b>Autom climate control</b>

**Limited Technical Inspection**

Airco functioning	<b>OK</b>	Battery functioning	<b>Yes</b>
Tires wear profile	<b>OK</b>	Sound engine	<b>OK</b>
Idle position	<b>OK</b>	Clutch test	<b>OK</b>
Engine startingtime	<b>OK</b>	Wiper fluid level	<b>OK</b>
Exhaust gass	<b>OK</b>	Lighting	<b>OK</b>
Transmission	<b>OK</b>	Wiperblades	<b>OK</b>
Handbrake	<b>OK</b>		

**Degree of wear**

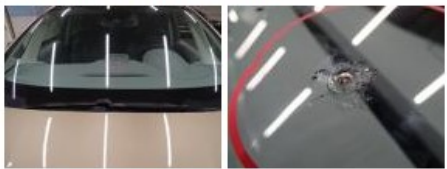
	<b>235/60/18/103 V LightMetal</b>			
Summer tyres:	Fr.L.	<b>Michelin: 1 mm</b>	Fr.R.	<b>Michelin: 1 mm</b>
	Re.L.	<b>Continental: 3 mm</b>	Re.R.	<b>Continental: 3 mm</b>

**Assistance equipment**

Total cost ex VAT	969,85
Wing F R, Scratch(es), LI - Repair and paint (complete)	264,21



Windscreen, Damaged, E - Replace	560,64
----------------------------------	--------



Interior, Dirty, Cleaning	50,00
---------------------------	-------



Alloy rim F R, Scratch(es), LI - Repair and paint (complete) 95,00

