



**RENAULT MASTER 02-: 1RVD229**

Vinnumber:	<b>VF1VA000056716662</b>	Versionname:	
First Registrationdate:		Fiscalpower:	
Expertise Mileage:	<b>57053</b>	Power Kw:	<b>107</b>
Bodytype:	<b>Transporter</b>	Body color:	<b>White</b>
Gearbox:	<b>MAN 6 VIT</b>	Paint type:	<b>Opaque</b>
Transmission:		Rims summer:	<b>Steel</b>
Fueltype:	<b>Diesel</b>	Oil level:	<b>OK</b>
Battery functioning:	<b>Yes</b>	Parking lot:	<b>TRU15</b>
Number of doors:	<b>4</b>		
Number of seats:	<b>3</b>		
Number head rests:	<b>3</b>		
Rims summer:	<b>Steel</b>		
Category:	<b>Light Commercial Vehicle</b>		
Oil level:	<b>OK</b>		
Registration Certificate Car (BE):	<b>Yes</b>		

**Options**

Radio CD	
Windows electric F	
Cruise Control	
Radio multimedia	
Type of headlighting:	<b>Headlighting Halogen</b>
Type of Lining:	<b>Lining fabrics</b>
Type of climate control:	<b>Manual climate control</b>

**Limited Technical Inspection**

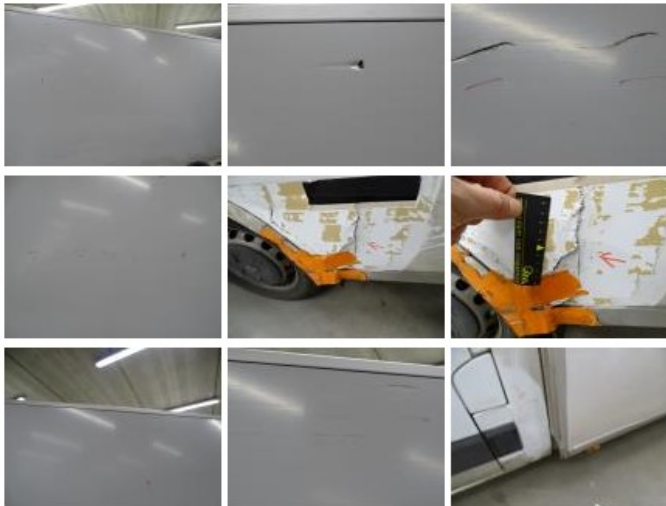
Airco functioning	<b>OK</b>	Battery functioning	<b>Yes</b>
Tires wear profile	<b>OK</b>	Sound engine	<b>OK</b>
Idle position	<b>OK</b>	Clutch test	<b>OK</b>
Engine startingtime	<b>OK</b>	Wiper fluid level	<b>OK</b>
Exhaust gass	<b>OK</b>	Lighting	<b>OK</b>
Transmission	<b>OK</b>	Wiperblades	<b>OK</b>
Handbrake	<b>OK</b>		

**Degree of wear**

	<b>225/65/16/112 R Steel</b>			
Summer tyres:	Fr.L.	<b>Continental: 3 mm</b>	Fr.R.	<b>Continental: 3 mm</b>
	Re.L.	<b>Continental: 7 mm</b>	Re.R.	<b>Continental: 7 mm</b>

**Assistance equipment**

Total cost ex VAT	<b>1316,46</b>
Wing R L, Bump(s) and scratch(es), LI - Repair and paint (complete)	<b>231,15</b>





Sill outer L, Bump(s) and scratch(es), LI - Repair and paint (complete) 232,88



Sidewall panel mid R, Damaged, I - Repair 100,00



Front bumper, Scratch(es), Smart repair 110,64



Trunk door panel R, Hole, I - Repair 100,00



Wing R R, Scratch(es), LI - Repair and paint (complete) 231,15



Bumper R, Bump(s), Smart repair 110,64



Interior, Dirty, Cleaning 100,00



Trunk door panel L, Hole, I - Repair 100,00

