



BMW 1: 1FAM194			
Vinnumber:	WBA1C91040J510986	Versionname:	1 HATCH 116d Eff.Dyn.Ed. 116PK
First Registrationdate:	7/05/2013	Fiscalpower:	
Expertise Mileage:	196009	Power Kw:	85
Bodytype:		Body color	Dark Blue
Gearbox:	MAN 6 VIT	Paint type	Metalic
Transmission:		Rims summer	Aluminium
Fueltype:	Diesel	Oil level	OK
Battery functioning	Yes	Parking lot	2730
Number of doors	5		
Number of seats	5		
Number head rests	5		
Rims summer	Aluminium		
Category	Passenger Car		
Oil level	OK		
Registration Certificate Car (BE)	Yes		

Options	
Radio CD	Central consol F
Windows electric F	Luggage cover
Windows electric R	Rear parking sensors
Cruise Control	
Steering wheel multifunctional	
Radio multimedia	
Type of headlighting	Headlighting Halogen
Type of GPS	GPS big screen color
Type of Lining	Lining fabrics
Type of climate control	Manual climate control

Limited Technical Inspection			
Airco functioning	OK	Battery functioning	Yes
Tires wear profile	OK	Sound engine	OK
Idle position	OK	Clutch test	OK
Engine startingtime	OK	Wiper fluid level	OK
Exhaust gass	OK	Lighting	OK
Transmission	OK	Wiperblades	OK
Handbrake	OK		

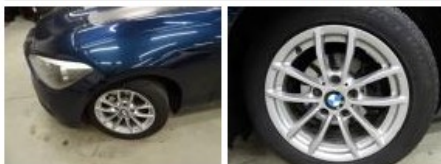
Degree of wear				
	205/55/16/91 H LightMetal			
Summer tyres:	Fr.L.	Goodyear: 5 mm	Fr.R.	Goodyear: 5 mm
	Re.L.	Bridgestone: 5 mm	Re.R.	Bridgestone: 5 mm

Assistance equipment	
Runflat	Yes

Total cost ex VAT	284,56
Protection plate M, Tear, E - Replace	74,00



Alloy rim F L, Scratch(es), LI - Repair and paint (complete)	95,00
--	--------------



Alloy rim F R, Scratch(es), Acceptable	0,00
--	-------------

No pictures to display

Rearview mirror housing L, Damaged, LI - Repair and paint (complete)	115,56
--	--------



Sill outer R, Scratch(es), Acceptable	0,00
---------------------------------------	------

No pictures to display