



BMW X5: PF7907

Vinnnumber:	WBAKS810300H90135	Versionname:	X5 M 50dAS 381PK Aut.
First Registrationdate:	16/07/2014	Fiscalpower:	
Expertise Mileage:	115011	Power Kw:	280
Bodytype:	SUV	Body color:	Black
Gearbox:	Automatic	Paint type:	Metalic
Transmission:		Rims summer:	Aluminium
Fueltype:	Diesel	Oil level:	OK
Battery functioning:	Yes	Parking lot:	2123
Number of doors:	5		
Number of seats:	5		
Number head rests:	5		
Rims summer:	Aluminium		
Category:	Passenger Car		
Oil level:	OK		

Options

Radio CD	Seats electric F L
Windows electric F	Seats electric F R
Windows electric R	Central consol F
Cruise Control	Luggage cover
Steering wheel multifunctional	Front parking sensors
Seats F heated	Rear parking sensors
Radio multimedia	
Type of headlighting	Headlighting Xenon
Type of GPS	GPS big screen color
Type of Lining	Lining leather
Type of climate control	Autom climate control
Head-up Display	

Limited Technical Inspection

Airco functioning	OK	Battery functioning	Yes
Tires wear profile	OK	Sound engine	OK
Idle position	OK	Clutch test	OK
Engine startingtime	OK	Wiper fluid level	OK
Exhaust gass	OK	Lighting	OK
Transmission	OK	Wiperblades	OK
Handbrake	OK		

Degree of wear

	315/35/20/110 W LightMetal			
Summer tyres:	Fr.L.	Bridgestone: 5 mm	Fr.R.	Bridgestone: 5 mm
	Re.L.	Bridgestone: 2 mm	Re.R.	Bridgestone: 2 mm

Assistance equipment

	Runflat	Yes
Total cost ex VAT		1333,34
Door F L, Bump(s), PDR - Knock out without painting		63,00



Alloy rim R L, Scratch(es), LI - Repair and paint (complete) 95,00



Alloy rim F R, Scratch(es), LI - Repair and paint (complete) 95,00



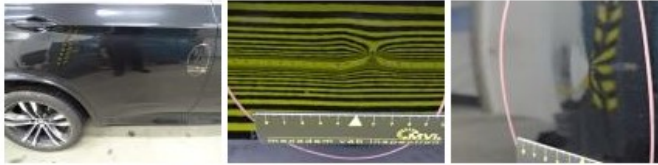
Front bumper, Scratch(es), LI - Repair and paint (complete) 254,16



Alloy rim F L, Scratch(es), LI - Repair and paint (complete) 95,00



Door R R, Bump(s) and scratch(es), LI - Repair and paint (complete) 382,02



Alloy rim R R, Scratch(es), LI - Repair and paint (complete) 95,00



Bumper R, Scratch(es), LI - Repair and paint (complete) 254,16



Rocker panel inner R R, Bump(s), Acceptable 0,00

No pictures to display