


FORD S-Max: 1FRG395

Vinnumber:	WF0SXXGBWSDC65423	Versionname:	TDCI
First Registrationdate:	1/10/2013	Fiscalpower:	
Expertise Mileage:	147016	Power Kw:	85
Bodytype:		Body color:	Grey
Gearbox:	MAN 6 VIT	Paint type:	Metalic
Transmission:	Front	Rims summer:	Aluminium
Fueltype:	Diesel	Oil level:	OK
Battery functioning:	Yes	Parking lot:	1104
Number of doors:	5		
Number of seats:	7		
Number head rests:	7		
Rims summer:	Aluminium		
Category:	Passenger Car		
Oil level:	OK		
Registration Certificate Car (BE):	Yes		

Options

Radio CD		Central consol F	
GPS storage		Luggage cover	
GPS storage	SD	Front parking sensors	
Windows electric F		Rear parking sensors	
Windows electric R		Type of Tow bar	Tow bar fixed
Cruise Control			
Steering wheel multifunctional			
Radio multimedia			
Type of headlighting	Headlighting Halogen		
Type of GPS	GPS big screen color		
Type of Lining	Lining fabrics		
Type of climate control	Autom climate control		
Adaptive cruise control			

Limited Technical Inspection

Airco functioning	OK	Battery functioning	Yes
Tires wear profile	OK	Sound engine	OK
Idle position	OK	Clutch test	OK
Engine startingtime	OK	Wiper fluid level	OK
Exhaust gass	OK	Lighting	OK
Transmission	OK	Wiperblades	OK
Handbrake	OK		

Degree of wear

	215/60/16/99 H LightMetal			
Winter tyres:	Fr.L.	Kleber: 6 mm	Fr.R.	Kleber: 6 mm
	Re.L.	Kleber: 5 mm	Re.R.	Kleber: 5 mm

Assistance equipment

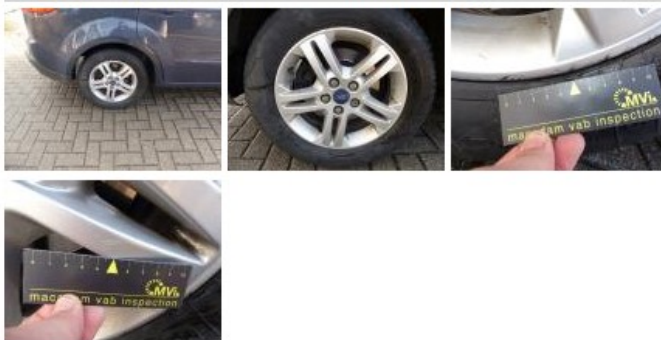
Repair kit	Yes	Compressor	Yes
Total cost ex VAT			972,64
Bumper corner R R, Scratch(es), Acceptable			0,00
<i>No pictures to display</i>			
Trunk lid covering R, Scratch(es), Acceptable			0,00
<i>No pictures to display</i>			
Internal Boot Lining L, Scratch(es), Acceptable			0,00
<i>No pictures to display</i>			
Wing R L, Scratch(es), LI - Repair and paint (complete)			369,84



Door R R, Bump(s), Acceptable	0,00
<i>No pictures to display</i>	
Alloy rim F L, Scratch(es), Acceptable	0,00
<i>No pictures to display</i>	
Door R L, Scratch(es), Acceptable	0,00
<i>No pictures to display</i>	
Alloy rim R L, Scratch(es), LI - Repair and paint (complete)	95,00



Alloy rim R R, Scratch(es), LI - Repair and paint (complete)	95,00
--	-------



Front bumper, Bump(s) and scratch(es), LI - Repair and paint (complete)	302,16
---	--------



Internal Boot Lining R, Scratch(es), Smart repair	110,64
---	--------



Seat cover R, Stain, Acceptable	0,00
<i>No pictures to display</i>	
Floor covering F L, Worn, P - Check	0,00
<i>No pictures to display</i>	