


**FORD S-Max: 1GCY601**

Vinnumber:	<b>WF0SXXGBWSD01488</b>	Versionname:	<b>TDCI</b>
First Registrationdate:	<b>3/01/2014</b>	Fiscalpower:	
Expertise Mileage:	<b>83206</b>	Power Kw:	<b>85</b>
Bodytype:		Body color:	<b>Grey</b>
Gearbox:	<b>MAN 6 VIT</b>	Paint type:	<b>Metalic</b>
Transmission:	<b>Front</b>	Rims summer:	<b>Aluminium</b>
Fueltype:	<b>Diesel</b>	Oil level:	<b>NOT OK</b>
Battery functioning:	<b>Yes</b>	Parking lot:	<b>2708</b>
Number of doors:	<b>5</b>		
Number of seats:	<b>7</b>		
Number head rests:	<b>7</b>		
Rims summer:	<b>Aluminium</b>		
Category:	<b>Passenger Car</b>		
Oil level:	<b>NOT OK</b>		
Registration Certificate Car (BE):	<b>Yes</b>		

**Options**

Radio CD		Seats electric F L
GPS storage		Central consol F
GPS storage	<b>SD</b>	Luggage cover
Windows electric F		Front parking sensors
Windows electric R		Rear parking sensors
Cruise Control		
Steering wheel multifunctional		
Radio multimedia		
Type of headlighting	<b>Headlighting Halogen</b>	
Type of GPS	<b>GPS big screen color</b>	
Type of Lining	<b>Lining fabrics</b>	
Type of climate control	<b>Autom climate control</b>	
Adaptive cruise control		

**Limited Technical Inspection**

Airco functioning	<b>OK</b>	Battery functioning	<b>Yes</b>
Tires wear profile	<b>OK</b>	Sound engine	<b>OK</b>
Idle position	<b>OK</b>	Clutch test	<b>OK</b>
Engine startingtime	<b>OK</b>	Wiper fluid level	<b>OK</b>
Exhaust gass	<b>OK</b>	Lighting	<b>OK</b>
Transmission	<b>OK</b>	Wiperblades	<b>OK</b>
Handbrake	<b>OK</b>		

**Degree of wear**

	<b>215/60/16/99 H LightMetal</b>			
Winter tyres:	Fr.L.	Michelin: 6 mm	Fr.R.	Michelin: 6 mm
	Re.L.	Michelin: 8 mm	Re.R.	Michelin: 8 mm

**Assistance equipment**

Repair kit	<b>Yes</b>	Compressor	<b>Yes</b>
------------	------------	------------	------------

Total cost ex VAT	179,88
Bumper R, Scratch(es), Acceptable	0,00
<i>No pictures to display</i>	
Mirror side blinker R, Scratch(es), Acceptable	0,00
<i>No pictures to display</i>	
Door R L, Bump(s) and scratch(es), Acceptable	0,00
<i>No pictures to display</i>	
Wing R L, Bump(s) and scratch(es), Acceptable	0,00
<i>No pictures to display</i>	
Maintenance book, Missing, E - Replace	0,00



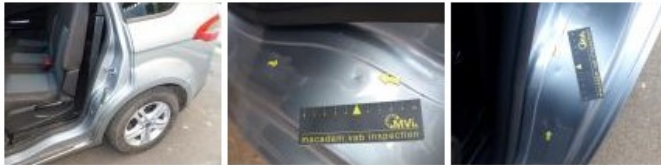
Floor covering F L, Worn, P - Check 0,00



Alloy rim R R, Scratch(es), Acceptable 0,00

No pictures to display

Wheel aperture R L, Bump(s) and scratch(es), It - Spot repair 115,56



Door F L, Scratch(es), Acceptable 0,00

No pictures to display

Bumper grille, Scratch(es), Acceptable 0,00

No pictures to display

Front bumper, Scratch(es), Acceptable 0,00

No pictures to display

Seat cover F L, Damaged, Smart repair 64,32

