


HYUNDAI I40: 1GFZ567

Vinnnumber:	KMHLC81UADU060527	Versionname:	i40 BRE Style 136PK
First Registrationdate:	29/01/2014	Fiscalpower:	
Expertise Mileage:	152811	Power Kw:	100
Bodytype:	Break	Body color:	Black
Gearbox:	MAN 6 VIT	Paint type:	Metalic
Transmission:	Front	Rims summer:	Aluminium
Fueltype:	Diesel	Oil level:	OK
Battery functioning:	Yes	Parking lot:	4208
Number of doors:	5		
Number of seats:	5		
Number head rests:	5		
Rims summer:	Aluminium		
Category:	Passenger Car		
Oil level:	OK		
Registration Certificate Car (BE):	Yes		

Options

Radio CD		Seats electric F L	
Windows electric F		Central consol F	
Windows electric R		Luggage cover	
Cruise Control		Front parking sensors	
Steering wheel multifunctional		Rear parking sensors	
Seats F heated		Type of Tow bar	Tow bar fixed
Radio multimedia			
Type of headlighting	Headlighting Xenon		
Type of GPS	GPS big screen color		
Type of Lining	Lining leather		
Type of climate control	Autom climate control		

Limited Technical Inspection

Airco functioning	OK	Battery functioning	Yes
Tires wear profile	OK	Sound engine	OK
Idle position	OK	Clutch test	OK
Engine startingtime	OK	Wiper fluid level	OK
Exhaust gass	OK	Lighting	OK
Transmission	OK	Wiperblades	OK
Handbrake	OK		

Degree of wear

	215/55/17/95 H LightMetal			
Summer tyres:	Fr.L.	Dunlop: 3 mm	Fr.R.	Dunlop: 3 mm
	Re.L.	Dunlop: 4 mm	Re.R.	Dunlop: 4 mm

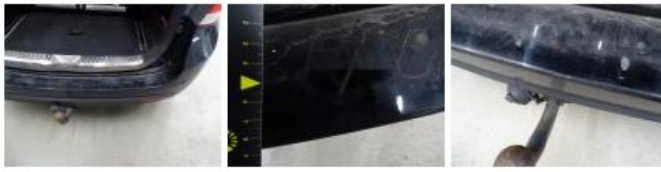
Assistance equipment

Spare wheel	Yes	Jack	Yes
-------------	------------	------	------------

Total cost ex VAT	1041,80
Alloy rim F R, Scratch(es), Acceptable	0,00
<i>No pictures to display</i>	
Bodywork, Not original part, Acceptable	0,00
<i>No pictures to display</i>	
Front bumper, Crack, Le - Replace and paint	735,00



Bumper R, Scratch(es), LI - Repair and paint (complete)	211,80
---	--------



Trunk lid covering R, Scratch(es), Acceptable	0,00
---	------

No pictures to display

Alloy rim F L, Scratch(es), LI - Repair and paint (complete)	95,00
--	-------



Door F L, Bump(s), Acceptable	0,00
-------------------------------	------

No pictures to display