



PEUGEOT Expert: 1CQE382

| | | | |
|-------------------------|---------------------------------|--------------|---|
| Vinnumber: | VF3XU9HM0BZ070473 | Versionname: | EXPERT B/F MWB 229 L2H1 FAP(EU5)90PK |
| First Registrationdate: | 1/02/2012 | Fiscalpower: | |
| Expertise Mileage: | 122498 | Power Kw: | 66 |
| Bodytype: | Transporter | Body color: | White |
| Gearbox: | MAN 5 VIT | Paint type: | Metalic |
| Transmission: | | Rims summer: | Steel |
| Fueltype: | Diesel | Oil level: | OK |
| Battery functioning: | Yes | Parking lot: | TRU11 |
| Number of doors: | 5 | | |
| Number of seats: | 3 | | |
| Number head rests: | 3 | | |
| Rims summer: | Steel | | |
| Category: | Light Commercial Vehicle | | |
| Oil level: | OK | | |

Options

| | | | |
|-------------------------|-------------------------------|----------------------|----------------------|
| Radio CD | | Rear parking sensors | |
| Windows electric F | | Type of Tow bar | Tow bar fixed |
| Type of headlighting | Headlighting Halogen | | |
| Type of Lining | Lining fabrics | | |
| Type of climate control | Manual climate control | | |

Limited Technical Inspection

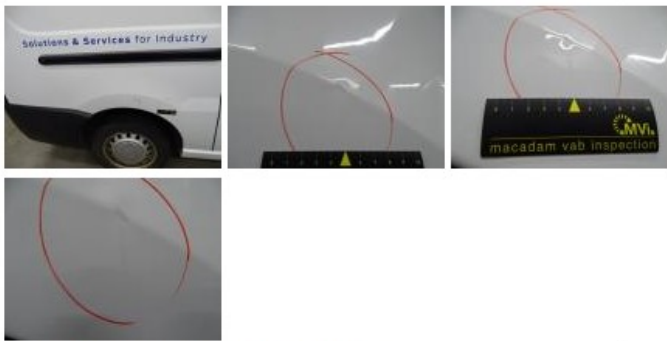
| | | | |
|---------------------|-----------|---------------------|------------|
| Airco functioning | OK | Battery functioning | Yes |
| Tires wear profile | OK | Sound engine | OK |
| Idle position | OK | Clutch test | OK |
| Engine startingtime | OK | Wiper fluid level | OK |
| Exhaust gass | OK | Lighting | OK |
| Transmission | OK | Wiperblades | OK |
| Handbrake | OK | | |

Degree of wear

| | | | | |
|---------------|------------------------------|---------------------|-------|---------------------|
| | 215/60/16/103 T Steel | | | |
| Summer tyres: | Fr.L. | Dunlop: 5 mm | Fr.R. | Dunlop: 5 mm |
| | Re.L. | Dunlop: 7 mm | Re.R. | Dunlop: 7 mm |

Assistance equipment





| | |
|--|---------------|
| Spare wheel | Yes |
| Total cost ex VAT | 941,56 |
| Wing R R, Bump(s) and scratch(es), LI - Repair and paint (complete) | 231,15 |



Rear bulkhead lining, Damaged, Smart repair **110,64**



Sidewall panel RR, Damaged, F. Replace **74,00**

| | |
|--|--------|
| Sidewall panel RR, Damaged, E - Replace | 79,00 |
|  | |
| Ignition key, Missing, E - Replace | 150,00 |
| No pictures to display | |
| Interior, Dirty, Cleaning | 100,00 |
|  | |
| Wing F L, Scratch(es), LI - Repair and paint (complete) | 165,13 |
|  | |
| Front bumper, Strained , Smart repair | 110,64 |
|  | |
|  | |
| Trunk door R R, Bump(s), Acceptable | 0,00 |
| No pictures to display | |
| Door F R, Scratch(es), Acceptable | 0,00 |
| No pictures to display | |
| Bodywork, Not original part, Acceptable | 0,00 |
| No pictures to display | |