



| | | | |
|---------------------------|--------------------------|--------------|-------------------------------------|
| VOLVO S80: 1EAR249 | | | |
| Vinnnumber: | YV1AS84A1D1168377 | Versionname: | S80 BER D2 Kinetic S/S 115PK |
| First Registrationdate: | 5/10/2012 | Fiscalpower: | 115PK |
| Expertise Mileage: | 131401 | Power Kw: | 85 |
| Bodytype: | | Body color: | Grey |
| Gearbox: | MAN 6 VIT | Paint type: | Metalic |
| Transmission: | Front | Rims summer: | Aluminium |
| Fueltype: | Diesel | Oil level: | OK |
| Battery functioning: | Yes | Parking lot: | 3531 |
| Number of doors: | 4 | | |
| Number of seats: | 5 | | |
| Number head rests: | 5 | | |
| Rims summer: | Aluminium | | |
| Category: | Passenger Car | | |
| Oil level: | OK | | |

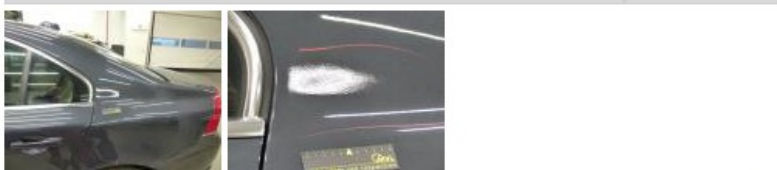
| | | | |
|--------------------------------|------------------------------|----------------------|--------------------------|
| Options | | | |
| Radio CD | | Seats electric F L | |
| GPS storage | HD | Sun Roof electric | |
| Windows electric F | | Rear parking sensors | |
| Windows electric R | | Type of Tow bar | Tow bar removable |
| Cruise Control | | | |
| Steering wheel multifunctional | | | |
| Type of headlighting | Headlighting Xenon | | |
| Type of GPS | GPS big screen color | | |
| Type of Lining | Lining leather | | |
| Type of climate control | Autom climate control | | |

| | | | |
|-------------------------------------|-----------|---------------------|------------|
| Limited Technical Inspection | | | |
| Airco functioning | OK | Battery functioning | Yes |
| Tires wear profile | OK | Sound engine | OK |
| Idle position | OK | Clutch test | OK |
| Engine startingtime | OK | Wiper fluid level | OK |
| Exhaust gass | OK | Lighting | OK |
| Transmission | OK | Wiperblades | OK |
| Handbrake | OK | | |

| | | | | |
|-----------------------|----------------------------------|-----------------------|-------|-----------------------|
| Degree of wear | | | | |
| | 225/50/17/98 W LightMetal | | | |
| Summer tyres: | Fr.L. | Michelin: 3 mm | Fr.R. | Michelin: 3 mm |
| | Re.L. | Michelin: 5 mm | Re.R. | Michelin: 5 mm |

| | | | |
|-----------------------------|------------|------|------------|
| Assistance equipment | | | |
| Spare tyre compact | Yes | Jack | Yes |

| | |
|----------------------------------|---------------|
| Total cost ex VAT | 285,00 |
| Wing R L, Bad repair, Acceptable | 0,00 |



| | |
|--|--------------|
| Alloy rim F R, Scratch(es), LI - Repair and paint (complete) | 95,00 |
|--|--------------|





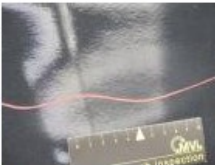
Alloy rim F L, Scratch(es), LI - Repair and paint (complete) 95,00



Alloy rim R R, Scratch(es), Acceptable 0,00

No pictures to display

Wing R R, Bad repair, Acceptable 0,00



Alloy rim R L, Scratch(es), LI - Repair and paint (complete) 95,00

