



RENAULT Scenic: 1DPJ950

Vinnumber:	VF1JZ14A647702165	Versionname:	SCENIC Energ.Authentique
First Registrationdate:	13/07/2012	Fiscalpower:	110PK
Expertise Mileage:	176639	Power Kw:	81
Bodytype:		Body color:	Grey
Gearbox:	MAN 6 VIT	Paint type:	Metalic
Transmission:		Rims summer:	Steel
Fueltype:	Diesel	Oil level:	OK
Battery functioning:	Yes	Parking lot:	2825
Number of doors:	5		
Number of seats:	5		
Number head rests:	5		
Rims summer:	Steel		
Category:	Passenger Car		
Oil level:	OK		

Options

Radio CD	Luggage cover
Windows electric F	Type of Tow bar
Windows electric R	Tow bar fixed
Radio multimedia	
Type of headlighting	Headlighting Halogen
Type of Lining	Lining fabrics
Type of climate control	Manual climate control

Limited Technical Inspection

Airco functioning	OK	Battery functioning	Yes
Tires wear profile	OK	Sound engine	OK
Idle position	OK	Clutch test	OK
Engine startingtime	OK	Wiper fluid level	OK
Exhaust gass	OK	Lighting	OK
Transmission	OK	Wiperblades	OK
Handbrake	OK		

Degree of wear

	205/60/16/92 H Steel			
Summer tyres:	Fr.L.	Dunlop: 4 mm	Fr.R.	Dunlop: 4 mm
	Re.L.	Dunlop: 3 mm	Re.R.	Dunlop: 3 mm

Assistance equipment

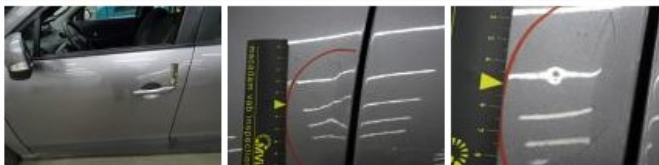
Repair kit	Yes	Compressor	Yes
------------	------------	------------	------------

Total cost ex VAT 1771,61

Door R R, Bump(s) and scratch(es), Acceptable 0,00

No pictures to display

Door F L, Bump(s), LI - Repair and paint (complete) 318,35



Wing F L, Scratch(es), Acceptable 0,00

No pictures to display

Bonnet, Bump(s), Acceptable 0,00

No pictures to display

Rear window, Scratch(es), Acceptable 0,00

No pictures to display

Interior, Dirty, Cleaning 50,00



Rocker panel inner R L, Scratch(es), LI - Repair and paint (complete) 115,56



Front bumper, Scratch(es), Smart repair 110,64



Bumper R, Bump(s) and scratch(es), LI - Repair and paint (complete) 211,80



Wheel cover F L, Scratch(es), E - Replace 30,00



Wing R L, Bump(s) and scratch(es), LI - Repair and paint (complete) 308,20



Wheel cover F R, Scratch(es), E - Replace 30,00



Roof, Scratch(es), LI - Repair and paint (complete) 481,50



Rocker panel inner F L, Bump(s) and scratch(es), LI - Repair and paint (complete)

115,56

