


PEUGEOT 308: 1ENZ249

Vinnnumber:	VF34E9HP0DS011631	Versionname:	308 SW Access 92PK
First Registrationdate:	4/02/2013	Fiscalpower:	
Expertise Mileage:	157608	Power Kw:	68
Bodytype:	Break	Body color:	Dark Blue
Gearbox:	MAN 5 VIT	Paint type:	Metalic
Transmission:	Front	Rims summer:	Steel
Fueltype:	Diesel	Oil level:	OK
Battery functioning:	Yes	Parking lot:	2805
Number of doors:	5		
Number of seats:	5		
Number head rests:	5		
Rims summer:	Steel		
Category:	Passenger Car		
Oil level:	OK		

Options

Radio CD	Central consol F
Windows electric F	Luggage cover
Windows electric R	Rear parking sensors
Cruise Control	
Steering wheel multifunctional	
Radio multimedia	
Type of headlighting	Headlighting Halogen
Type of Lining	Lining fabrics
Type of climate control	Autom climate control

Limited Technical Inspection

Airco functioning	OK	Battery functioning	Yes
Tires wear profile	OK	Sound engine	OK
Idle position	OK	Clutch test	OK
Engine startingtime	OK	Wiper fluid level	OK
Exhaust gass	OK	Lighting	OK
Transmission	OK	Wiperblades	OK
Handbrake	OK		

Degree of wear

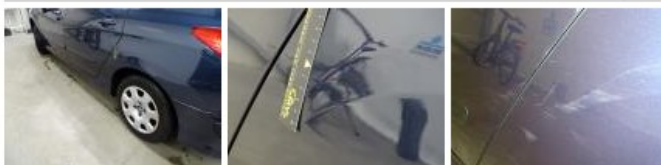
	195/65/15/91 H Steel			
Winter tyres:	Fr.L.	Michelin: 5 mm	Fr.R.	Michelin: 5 mm
	Re.L.	Michelin: 6 mm	Re.R.	Michelin: 6 mm

Assistance equipment

Spare wheel	Yes	Jack	Yes
-------------	------------	------	------------

Total cost ex VAT	1359,00
-------------------	----------------

Wing R L, Bump(s) and scratch(es), LI - Repair and paint (complete)	308,20
---	---------------



Wheel cover F L, Scratch(es), Acceptable	0,00
--	-------------

No pictures to display

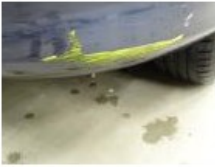
Bumper corner R L, Crack, E - Replace	74,00
---------------------------------------	--------------



Front bumper, Crack, Le - Replace and paint	735,00
---	---------------



Bumper R, Scratch(es), LI - Repair and paint (complete)	211,80
---	--------



Wheel cover F R, Scratch(es), E - Replace	30,00
---	-------

