


BMW 520: 1DWT814

| | | | |
|-------------------------|--------------------------|--------------|--------------------------------|
| Vinnumber: | WBAFW91000DW47919 | Versionname: | 5 BER 520d |
| First Registrationdate: | 20/09/2012 | Fiscalpower: | Eff.Dyn.Ed.St/Stp 163PK |
| Expertise Mileage: | 76833 | Power Kw: | 120 |
| Bodytype: | | Body color: | Dark Grey |
| Gearbox: | MAN 6 VIT | Paint type: | Metalic |
| Transmission: | Back | Rims summer: | Aluminium |
| Fueltype: | Diesel | Oil level: | OK |
| Maintenance: | UITVOEREN | Parking lot: | 2732 |
| Maintenance: | NOT OK | | |
| Battery functioning: | Yes | | |
| Number of doors: | 4 | | |
| Number of seats: | 5 | | |
| Number head rests: | 5 | | |
| Rims summer: | Aluminium | | |
| Category: | Passenger Car | | |
| Oil level: | OK | | |

Options

| | | |
|--------------------------------|------------------------------|-----------------------|
| Radio CD | | Seats electric F L |
| GPS storage | HD | Seats electric F R |
| GPS storage | | Central consol F |
| Windows electric F | | Front parking sensors |
| Windows electric R | | Rear parking sensors |
| Cruise Control | | |
| Steering wheel multifunctional | | |
| Type of headlighting | Headlighting Xenon | |
| Type of GPS | GPS big screen color | |
| Type of Lining | Lining leather | |
| Type of climate control | Autom climate control | |

Limited Technical Inspection

| | | | |
|---------------------|-----------|---------------------|------------|
| Airco functioning | OK | Battery functioning | Yes |
| Tires wear profile | OK | Sound engine | OK |
| Idle position | OK | Clutch test | OK |
| Engine startingtime | OK | Wiper fluid level | OK |
| Exhaust gass | OK | Lighting | OK |
| Transmission | OK | Wiperblades | OK |
| Handbrake | OK | | |

Degree of wear

| | | | | |
|---------------|----------------------------------|--------------------------|-------|--------------------------|
| | 225/55/17/97 H LightMetal | | | |
| Winter tyres: | Fr.L. | Uniroyal: 5 mm | Fr.R. | Uniroyal: 5 mm |
| | Re.L. | Continental: 5 mm | Re.R. | Continental: 5 mm |

Assistance equipment

| | | | |
|------------|------------|------------|------------|
| Repair kit | Yes | Compressor | Yes |
|------------|------------|------------|------------|

| | |
|-------------------|--------|
| Total cost ex VAT | 397,16 |
|-------------------|--------|

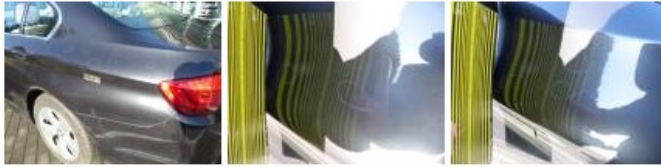
| | |
|---|--------|
| Front bumper, Bump(s) and scratch(es), LI - Repair and paint (complete) | 302,16 |
|---|--------|



| | |
|------------------------------------|------|
| Roof pillar L, Bump(s), Acceptable | 0,00 |
|------------------------------------|------|



Wing R L, Hail damage, PDR - Hail 0,00



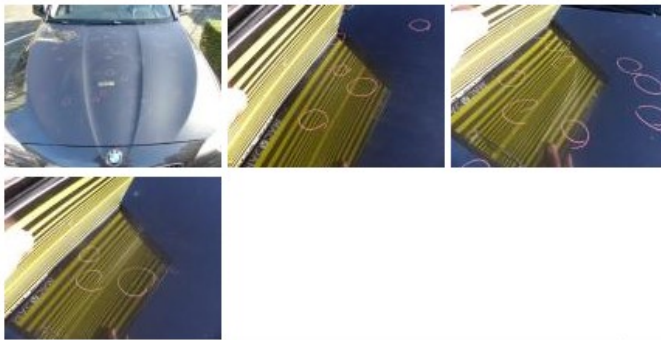
Alloy rim F L, Scratch(es), LI - Repair and paint (complete) 95,00



Roof, Hail damage, PDR - Hail 0,00



Bonnet, Hail damage, PDR - Hail 0,00



Tailgate, Hail damage, PDR - Hail 0,00



Bumper R, Scratch(es), Acceptable 0,00



Wing F L, Scratch(es), Acceptable 0,00



Door R L, Bump(s) and scratch(es), Acceptable 0,00



Roof pillar R, Bump(s), Acceptable 0,00



Maintenance, Maintenance, Execute 0,00

