



FORD C-MAX: 1BJM583

| | | | |
|------------------------------------|--------------------------|--------------|-----------------------------|
| Vinnnumber: | WFOJXXWPBJAR15379 | Versionname: | C-MAX Trend DPF 95PK |
| First Registrationdate: | 15/06/2011 | Fiscalpower: | |
| Expertise Mileage: | 167058 | Power Kw: | 70 |
| Bodytype: | | Body color: | Black |
| Gearbox: | MAN 6 VIT | Paint type: | Metalic |
| Transmission: | | Rims summer: | Aluminium |
| Fueltype: | Diesel | Oil level: | OK |
| Battery functioning: | Yes | Parking lot: | 3506 |
| Number of doors: | 5 | | |
| Number of seats: | 5 | | |
| Number head rests: | 5 | | |
| Rims summer: | Aluminium | | |
| Category: | Passenger Car | | |
| Oil level: | OK | | |
| Registration Certificate Car (BE): | Yes | | |

Options

| | |
|--------------------------------|------------------------------|
| Radio CD | Luggage cover |
| Windows electric F | Rear parking sensors |
| Steering wheel multifunctional | |
| Radio multimedia | |
| Type of headlighting: | Headlighting Halogen |
| Type of GPS: | GPS big screen color |
| Type of Lining: | Lining fabrics |
| Type of climate control: | Autom climate control |

Limited Technical Inspection

| | | | |
|---------------------|-----------|---------------------|------------|
| Airco functioning | OK | Battery functioning | Yes |
| Tires wear profile | OK | Sound engine | OK |
| Idle position | OK | Clutch test | OK |
| Engine startingtime | OK | Wiper fluid level | OK |
| Exhaust gass | OK | Lighting | OK |
| Transmission | OK | Wiperblades | OK |
| Handbrake | OK | | |

Degree of wear

| | | | | |
|---------------|----------------------------------|--------------------------|-------|--------------------------|
| | 215/55/16/93 V LightMetal | | | |
| Summer tyres: | Fr.L. | Bridgestone: 5 mm | Fr.R. | Bridgestone: 5 mm |
| | Re.L. | Bridgestone: 4 mm | Re.R. | Bridgestone: 4 mm |

Assistance equipment

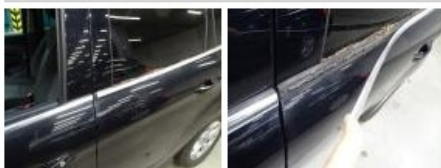
| | | | |
|------------|------------|------------|------------|
| Repair kit | Yes | Compressor | Yes |
|------------|------------|------------|------------|

| | |
|--------------------------|----------------|
| Total cost ex VAT | 1038,85 |
|--------------------------|----------------|

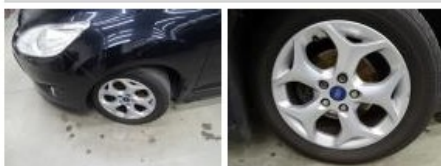
| | |
|--|-------------|
| Bumper R, Scratch(es), Acceptable | 0,00 |
|--|-------------|

No pictures to display

| | |
|--|--------------|
| Door R L, Unclapsed, N - Fit/Remove | 44,00 |
|--|--------------|



| | |
|---|--------------|
| Alloy rim F L, Scratch(es), LI - Repair and paint (complete) | 95,00 |
|---|--------------|



| | |
|--|-------------|
| Wing R L, Bump(s) and scratch(es), Acceptable | 0,00 |
|--|-------------|

No pictures to display

Interior, Dirty, Cleaning

100,00



Roof, Chemical polution, LI - Repair and paint (complete)

481,50



Door F R, Bump(s) and scratch(es), LI - Repair and paint (complete)

318,35

