



| VOLKSWAGEN Passat: 1ERW864         |                          |              |                               |
|------------------------------------|--------------------------|--------------|-------------------------------|
| Vinnumber:                         | <b>WVWZZZ3CZDE096434</b> | Versionname: | <b>PASSAT VAR Comfortline</b> |
| First Registrationdate:            | <b>5/03/2013</b>         | Fiscalpower: | <b>136PK</b>                  |
| Expertise Mileage:                 | <b>137171</b>            | Power Kw:    | <b>100</b>                    |
| Bodytype:                          | <b>Break</b>             | Body color:  | <b>Dark Blue</b>              |
| Gearbox:                           | <b>MAN 6 VIT</b>         | Paint type:  | <b>Metalic</b>                |
| Transmission:                      | <b>Front</b>             | Rims summer: | <b>Aluminium</b>              |
| Fueltype:                          | <b>Diesel</b>            | Oil level:   | <b>OK</b>                     |
| Battery functioning:               | <b>Yes</b>               | Parking lot: | <b>1523</b>                   |
| Number of doors:                   | <b>5</b>                 |              |                               |
| Number of seats:                   | <b>5</b>                 |              |                               |
| Number head rests:                 | <b>5</b>                 |              |                               |
| Rims summer:                       | <b>Aluminium</b>         |              |                               |
| Category:                          | <b>Passenger Car</b>     |              |                               |
| Oil level:                         | <b>OK</b>                |              |                               |
| Registration Certificate Car (BE): | <b>Yes</b>               |              |                               |

| Options                        |                              |
|--------------------------------|------------------------------|
| Radio CD                       | Sun Roof electric            |
| Windows electric F             | Panoramic roof               |
| Windows electric R             | Central consol F             |
| Cruise Control                 | Luggage cover                |
| Steering wheel multifunctional | Front parking sensors        |
| Seats F heated                 | Rear parking sensors         |
| Radio multimedia               |                              |
| Type of headlighting:          | <b>Headlighting Halogen</b>  |
| Type of GPS:                   | <b>GPS big screen color</b>  |
| Type of Lining:                | <b>Lining leather</b>        |
| Type of climate control:       | <b>Autom climate control</b> |

| Limited Technical Inspection |           |                     |            |
|------------------------------|-----------|---------------------|------------|
| Airco functioning            | <b>OK</b> | Battery functioning | <b>Yes</b> |
| Tires wear profile           | <b>OK</b> | Sound engine        | <b>OK</b>  |
| Idle position                | <b>OK</b> | Clutch test         | <b>OK</b>  |
| Engine startingtime          | <b>OK</b> | Wiper fluid level   | <b>OK</b>  |
| Exhaust gass                 | <b>OK</b> | Lighting            | <b>OK</b>  |
| Transmission                 | <b>OK</b> | Wiperblades         | <b>OK</b>  |
| Handbrake                    | <b>OK</b> |                     |            |

| Degree of wear |                                  |                     |       |                     |
|----------------|----------------------------------|---------------------|-------|---------------------|
|                | <b>215/55/16/91 H LightMetal</b> |                     |       |                     |
| Winter tyres:  | Fr.L.                            | <b>Kleber: 5 mm</b> | Fr.R. | <b>Kleber: 5 mm</b> |
|                | Re.L.                            | <b>Kleber: 6 mm</b> | Re.R. | <b>Kleber: 6 mm</b> |

| Assistance equipment                                    |            |      |                |
|---|------------|------|----------------|
| Spare wheel   | <b>Yes</b> | Jack | <b>Yes</b>     |
| Total cost ex VAT                                       |            |      | <b>3060,53</b> |
| Bumper R, Scratch(es), LI - Repair and paint (complete) |            |      | <b>211,80</b>  |



|   |               |
|---|---------------|
| Door R L, Damaged, Le - Replace and paint | <b>946,92</b> |
|---|---------------|



Wing R L, Scratch(es), LI - Repair and paint (complete) 308,20



Alloy rim F L, Scratch(es), LI - Repair and paint (complete) 95,00



Wing R R, Scratch(es), LI - Repair and paint (complete) 308,20



Sill outer L, Bump(s) and scratch(es), LI - Repair and paint (complete) 0,00



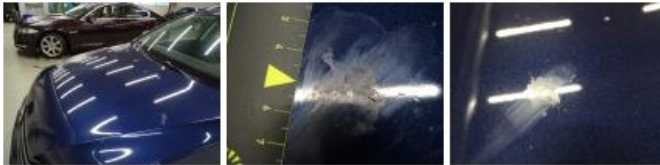
Ignition key, Missing, E - Replace 150,00

No pictures to display

Door R R, Scratch(es), LI - Repair and paint (complete) 318,35



Bonnet, Chemical polution, LI - Repair and paint (complete) 290,08



Wing F R, Scratch(es), LI - Repair and paint (complete) 220,18



Front bumper, Scratch(es), LI - Repair and paint (complete) 211,80

