



| VOLKSWAGEN Sharan: 1BXS905 | | | |
|----------------------------|--------------------------|--------------|-------------------------------------|
| Vinnnumber: | WVWZZZ7NZCV013040 | Versionname: | SHARAN Comfortline BMT 136PK |
| First Registrationdate: | 29/09/2011 | Fiscalpower: | |
| Expertise Mileage: | 187587 | Power Kw: | 100 |
| Bodytype: | MPV | Body color: | Dark Grey |
| Gearbox: | MAN 6 VIT | Paint type: | Metalic |
| Transmission: | Front | Rims summer: | Aluminium |
| Fueltype: | Diesel | Oil level: | OK |
| Battery functioning: | Yes | Parking lot: | 1307 |
| Number of doors: | 5 | | |
| Number of seats: | 5 | | |
| Number head rests: | 5 | | |
| Rims summer: | Aluminium | | |
| Category: | Passenger Car | | |
| Oil level: | OK | | |

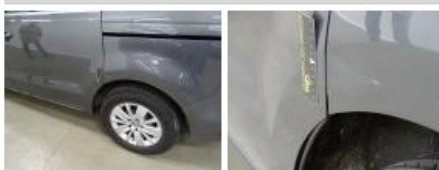
| Options | |
|--------------------------------|-------------------------------|
| Radio CD | Sun Roof electric |
| Windows electric F | Panoramic roof |
| Windows electric R | Central consol F |
| Cruise Control | Luggage cover |
| Steering wheel multifunctional | Front parking sensors |
| Radio multimedia | Rear parking sensors |
| Type of headlighting | Headlighting Halogen |
| Type of GPS | GPS big screen color |
| Type of Lining | Lining fabrics |
| Type of climate control | Manual climate control |

| Limited Technical Inspection | | | |
|------------------------------|-----------|---------------------|------------|
| Airco functioning | OK | Battery functioning | Yes |
| Tires wear profile | OK | Sound engine | OK |
| Idle position | OK | Clutch test | OK |
| Engine startingtime | OK | Wiper fluid level | OK |
| Exhaust gass | OK | Lighting | OK |
| Transmission | OK | Wiperblades | OK |
| Handbrake | OK | | |

| Degree of wear | | | | |
|----------------|----------------------------------|--------------------------|-------|--------------------------|
| | 215/60/16/95 H LightMetal | | | |
| Summer tyres: | Fr.L. | Continental: 5 mm | Fr.R. | Continental: 5 mm |
| | Re.L. | Continental: 6 mm | Re.R. | Continental: 6 mm |

| Assistance equipment | |
|----------------------|------------|
| Runflat | Yes |

| | |
|-----------------------------------------------------|---------------|
| Total cost ex VAT | 231,12 |
| Wing F L, Scratch(es), Acceptable | 0,00 |
| <i>No pictures to display</i> | |
| Wing R L, Bump(s) and scratch(es), It - Spot repair | 115,56 |



| | |
|-----------------------------------------|---------------|
| Door R R, Scratch(es), It - Spot repair | 115,56 |
|-----------------------------------------|---------------|



| | |
|------------------------------------------------|------|
| Front bumper, Bump(s), Acceptable | 0,00 |
| <i>No pictures to display</i> | |
| Rearview mirror housing R, Damaged, Acceptable | 0,00 |
| <i>No pictures to display</i> | |
| Bumper R, Scratch(es), Acceptable | 0,00 |
| <i>No pictures to display</i> | |
| Door F L, Bump(s) and scratch(es), Acceptable | 0,00 |
| <i>No pictures to display</i> | |
| Door R L, Bump(s), Acceptable | 0,00 |
| <i>No pictures to display</i> | |
| Wing F R, Scratch(es), Acceptable | 0,00 |
| <i>No pictures to display</i> | |
| Bonnet, Bad repair, Paint | 0,00 |

