


**FORD S Max: 1HVX221**

Vinnnumber:	<b>WF0SXXGBWSEB89962</b>	Versionname:	<b>S-MAX Titanium Style St/St DPF 115PK</b>
First Registrationdate:	<b>16/10/2014</b>	Fiscalpower:	
Expertise Mileage:	<b>165013</b>	Power Kw:	<b>85</b>
Bodytype:	<b>MPV</b>	Body color:	<b>Brown</b>
Gearbox:	<b>MAN 6 VIT</b>	Paint type:	<b>Metalic</b>
Transmission:	<b>Front</b>	Rims summer:	<b>Aluminium</b>
Fueltype:	<b>Diesel</b>	Oil level:	<b>OK</b>
Battery functioning:	<b>Yes</b>	Parking lot:	<b>3428</b>
Number of doors:	<b>5</b>		
Number of seats:	<b>5</b>		
Number head rests:	<b>5</b>		
Rims summer:	<b>Aluminium</b>		
Category:	<b>Passenger Car</b>		
Oil level:	<b>OK</b>		
Registration Certificate Car (BE):	<b>Yes</b>		

**Options**

Radio CD		Panoramic roof	
GPS storage	<b>SD</b>	Central consol F	
GPS storage		Luggage cover	
Windows electric F		Rear parking sensors	
Windows electric R		Type of Tow bar	<b>Tow bar removable</b>
Cruise Control			
Steering wheel multifunctional			
Type of headlighting	<b>Headlighting Halogen</b>		
Type of GPS	<b>GPS big screen color</b>		
Type of Lining	<b>Lining leather</b>		
Type of climate control	<b>Autom climate control</b>		

**Limited Technical Inspection**

Power steering	<b>Yes</b>	Battery functioning	<b>Yes</b>
Airco functioning	<b>OK</b>	Sound engine	<b>OK</b>
Tires wear profile	<b>OK</b>	Clutch test	<b>OK</b>
Idle position	<b>OK</b>	Wiper fluid level	<b>OK</b>
Engine startingtime	<b>OK</b>	Lighting	<b>OK</b>
Exhaust gass	<b>OK</b>	Wiperblades	<b>OK</b>
Transmission	<b>OK</b>		
Handbrake	<b>OK</b>		

**Degree of wear**

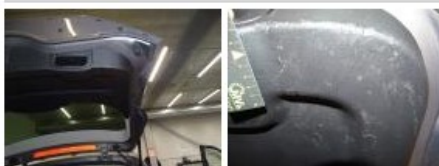
	<b>225/50/17/98 H LightMetal</b>			
Winter tyres:	Fr.L.	<b>Bridgestone: 3 mm</b>	Fr.R.	<b>Bridgestone: 3 mm</b>
	Re.L.	<b>Bridgestone: 5 mm</b>	Re.R.	<b>Bridgestone: 5 mm</b>

**Assistance equipment**

Repair kit	<b>No</b>	Compressor	<b>No</b>
------------	-----------	------------	-----------

Total cost ex VAT	735,56
-------------------	--------

Trunk lid covering R, Damaged, E - Replace	84,00
--	-------



Wing R L, Bump(s), PDR - Knock out without painting	63,00
---	-------



Rearview mirror L complete, Broken, E - Replace 192,00



Bonnet, Stone chip(s), Acceptable 0,00

No pictures to display

Door F L, Bump(s), Acceptable 0,00

No pictures to display

Bumper R, Scratch(es), Acceptable 0,00

No pictures to display

Sill outer L, Scratch(es), It - Spot repair 115,56



Windscreen, Stone chip(s), Acceptable 0,00

No pictures to display

Front bumper, Stone chip(s), Acceptable 0,00

No pictures to display

Alloy rim F L, Scratch(es), Acceptable 0,00

No pictures to display

Engine protective plate, Broken, E - Replace 149,00



Door R L, Scratch(es), LI - Repair and paint (complete) 0,00



Alloy rim R R, Scratch(es), Acceptable 0,00

No pictures to display

Tyre repair kit, Missing, E - Replace 0,00



Alloy rim F R, Scratch(es), Acceptable 0,00

No pictures to display

Door panel R R, Tear, E - Replace 132,00

