


**BMW 5: 1FMW822**

Vinnumber:	<b>WBA5J31050D070540</b>	Versionname:	<b>5 TOURING 520d 163PK</b>
First Registrationdate:	<b>23/08/2013</b>	Fiscalpower:	
Expertise Mileage:	<b>98292</b>	Power Kw:	<b>120</b>
Bodytype:	<b>Break</b>	Body color:	<b>Blue</b>
Gearbox:	<b>MAN 6 VIT</b>	Paint type:	<b>Metalic</b>
Transmission:	<b>Back</b>	Rims summer:	<b>Aluminium</b>
Fueltype:	<b>Diesel</b>	Oil level:	<b>OK</b>
Battery functioning:	<b>Yes</b>	Parking lot:	<b>1507</b>
Number of doors:	<b>5</b>		
Number of seats:	<b>5</b>		
Number head rests:	<b>5</b>		
Rims summer:	<b>Aluminium</b>		
Category:	<b>Passenger Car</b>		
Oil level:	<b>OK</b>		

**Options**

Radio CD		Seats electric F L	
GPS storage	<b>HD</b>	Seats electric F R	
GPS storage		Sun Roof electric	
Windows electric F		Panoramic roof	
Windows electric R		Central consol F	
Cruise Control		Luggage cover	
Steering wheel multifunctional		Front parking sensors	
Seats F heated		Rear parking sensors	
Radio multimedia		Type of Tow bar	<b>Tow bar fixed</b>
Type of headlighting	<b>Headlighting Xenon</b>		
Type of GPS	<b>GPS big screen color</b>		
Type of Lining	<b>Lining leather</b>		
Type of climate control	<b>Autom climate control</b>		

**Limited Technical Inspection**

Power steering	<b>Yes</b>	Battery functioning	<b>Yes</b>
Airco functioning	<b>OK</b>	Sound engine	<b>OK</b>
Tires wear profile	<b>OK</b>	Clutch test	<b>OK</b>
Idle position	<b>OK</b>	Wiper fluid level	<b>OK</b>
Engine startingtime	<b>OK</b>	Lighting	<b>OK</b>
Exhaust gass	<b>OK</b>	Wiperblades	<b>OK</b>
Transmission	<b>OK</b>		
Handbrake	<b>OK</b>		

**Degree of wear**

	<b>225/55/17/97 H LightMetal</b>			
Winter tyres:	Fr.L.	<b>Goodyear: 7 mm</b>	Fr.R.	<b>Goodyear: 7 mm</b>
	Re.L.	<b>Goodyear: 4 mm</b>	Re.R.	<b>Goodyear: 4 mm</b>

**Assistance equipment**

Repair kit	<b>Yes</b>	Compressor	<b>Yes</b>
------------	------------	------------	------------

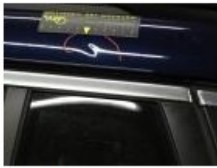
Total cost ex VAT	915,16
Alloy rim F R, Scratch(es), LI - Repair and paint (complete)	95,00



Alloy rim F L, Scratch(es), Acceptable	0,00
<i>No pictures to display</i>	
Door R R, Scratch(es), Acceptable	0,00
<i>No pictures to display</i>	
Seat cover F R, Burned, E - Replace	408,00



Roof pillar L, Bump(s), PDR - Knock out without painting	63,00
----------------------------------------------------------	-------



Wing F R, Scratch(es), Acceptable	0,00
-----------------------------------	------

*No pictures to display*

Alloy rim R R, Scratch(es), Acceptable	0,00
----------------------------------------	------

*No pictures to display*

Alloy rim R L, Scratch(es), LI - Repair and paint (complete)	95,00
--------------------------------------------------------------	-------



Front bumper, Scratch(es), LI - Repair and paint (complete)	254,16
-------------------------------------------------------------	--------

