



**TOYOTA GRAND PRIUS+: 1NB948**

Vinnnumber:	<b>JTDZ53EU003118210</b>	Versionname:	<b>1.8 VVT-I HYBRID ACTIVE</b>
First Registrationdate:	<b>14/01/2016</b>	Fiscalpower:	<b>AUTO</b>
Expertise Mileage:	<b>29674</b>	Power Kw:	<b>100</b>
Bodytype:		Body color:	<b>White</b>
Gearbox:	<b>Automatic</b>	Paint type:	<b>Opaque</b>
Transmission:	<b>Back</b>	Rims summer:	<b>Steel</b>
Fueltype:	<b>Hybrid Petrol</b>	Oil level:	<b>OK</b>
Battery functioning:	<b>Yes</b>	Parking lot:	<b>3227</b>
Number of doors:	<b>5</b>		
Number of seats:	<b>7</b>		
Number head rests:	<b>7</b>		
Rims summer:	<b>Steel</b>		
Category:	<b>Passenger Car</b>		
Oil level:	<b>OK</b>		
Registration Certificate Car (BE):	<b>Yes</b>		

**Options**

Radio CD		Central consol F
GPS storage	<b>HD</b>	Luggage cover
GPS storage		Front parking sensors
Windows electric F		Rear parking sensors
Windows electric R		
Cruise Control		
Steering wheel multifunction		
Alarm		
Radio multimedia		
Type of headlighting	<b>Headlighting Xenon</b>	
Type of GPS	<b>GPS big screen color</b>	
Type of Lining	<b>Lining fabrics</b>	
Type of climate control	<b>Autom climate control</b>	

**Limited Technical Inspection**

Power steering	<b>Yes</b>	Battery functioning	<b>Yes</b>
Airco functioning	<b>OK</b>	Sound engine	<b>OK</b>
Tires wear profile	<b>OK</b>	Clutch test	<b>OK</b>
Idle position	<b>OK</b>	Wiper fluid level	<b>OK</b>
Engine startingtime	<b>OK</b>	Lighting	<b>OK</b>
Exhaust gass	<b>OK</b>	Wiperblades	<b>OK</b>
Transmission	<b>OK</b>		
Handbrake	<b>OK</b>		

**Degree of wear**

	<b>205/60/16/92 V LightMetal</b>			
Summer tyres:	Fr.L.	<b>Michelin: 5 mm</b>	Fr.R.	<b>Michelin: 5 mm</b>
	Re.L.	<b>Michelin: 6 mm</b>	Re.R.	<b>Michelin: 6 mm</b>

**Assistance equipment**

Spare tyre compact	<b>Yes</b>	Jack	<b>Yes</b>
--------------------	------------	------	------------

Total cost ex VAT	610,15
-------------------	--------

Door R R, Scratch(es), Acceptable	0,00
-----------------------------------	------

*No pictures to display*

Front bumper, Bump(s), Acceptable	0,00
-----------------------------------	------

*No pictures to display*

Spoiler R, Damaged, E - Replace	159,20
---------------------------------	--------





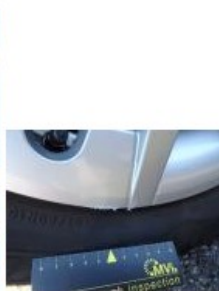
Wheel cover R L, Scratch(es), Acceptable 0,00

No pictures to display

Door F R, Bump(s), LI - Repair and paint (complete) 318,35



Wheel cover F R, Scratch(es), E - Replace 30,00



Tailgate, Bump(s), PDR - Knock out without painting 102,60

