



VOLKSWAGEN Touran: 1GIL217

| | | | |
|------------------------------------|-------------------------|--------------|-----------------------------|
| Vinnnumber: | WVGZZ1TZEW060692 | Versionname: | TOURAN Trendline BMT |
| First Registrationdate: | 17/02/2014 | Fiscalpower: | Start/Stop 105PK |
| Expertise Mileage: | 68439 | Power Kw: | 77 |
| Bodytype: | MPV | Body color: | Beige |
| Gearbox: | MAN 6 VIT | Paint type: | Metalic |
| Transmission: | Front | Rims summer: | Aluminium |
| Fueltype: | Diesel | Oil level: | OK |
| Battery functioning: | Yes | Parking lot: | 3725 |
| Number of doors: | 5 | | |
| Number of seats: | 7 | | |
| Number head rests: | 7 | | |
| Rims summer: | Aluminium | | |
| Category: | Passenger Car | | |
| Oil level: | OK | | |
| Registration Certificate Car (BE): | Yes | | |

Options

| | | |
|--------------------------------|------------------------------|----------------------|
| Radio CD | | Sun Roof electric |
| GPS storage | HD | Panoramic roof |
| GPS storage | | Central consol F |
| Windows electric F | | Luggage cover |
| Windows electric R | | Rear parking sensors |
| Cruise Control | | |
| Steering wheel multifunctional | | |
| Radio multimedia | | |
| Type of headlighting | Headlighting Halogen | |
| Type of GPS | GPS big screen color | |
| Type of Lining | Lining fabrics | |
| Type of climate control | Autom climate control | |

Limited Technical Inspection

| | | | |
|---------------------|------------|---------------------|---------------|
| Power steering | Yes | Battery functioning | Yes |
| Airco functioning | OK | Sound engine | OK |
| Tires wear profile | OK | Clutch test | NOT OK |
| Idle position | OK | Wiper fluid level | OK |
| Engine startingtime | OK | Lighting | OK |
| Exhaust gass | OK | Wiperblades | OK |
| Transmission | OK | | |
| Handbrake | OK | | |

Degree of wear

| | | | | |
|---------------|----------------------------------|---------------------|-------|---------------------|
| | 205/55/16/94 V LightMetal | | | |
| Winter tyres: | Fr.L. | Kleber: 5 mm | Fr.R. | Kleber: 5 mm |
| | Re.L. | Kleber: 5 mm | Re.R. | Kleber: 5 mm |

Assistance equipment

| | | | |
|------------|------------|------------|------------|
| Repair kit | Yes | Compressor | Yes |
|------------|------------|------------|------------|

| | |
|-------------------|---------|
| Total cost ex VAT | 1468,20 |
|-------------------|---------|

| | |
|---------------------------------------|------|
| Windscreen, Stone chip(s), Acceptable | 0,00 |
|---------------------------------------|------|

No pictures to display

| | |
|---|--------|
| Rearview mirror L complete, Broken, E - Replace | 168,00 |
|---|--------|



| | |
|---|------|
| Alloy rim R R polished, Scratch(es), Acceptable | 0,00 |
|---|------|

No pictures to display

| | |
|---|--------|
| Front bumper, Scratch(es), LI - Repair and paint (complete) | 211,80 |
|---|--------|



Maintenance book, Missing, E - Replace 0,00

No pictures to display

Seat cover F R, Stain, Cleaning 25,00



Door R L, Repaired, Acceptable 0,00

No pictures to display

Backrest cover R L, Missing, E - Replace 49,00



Wing R R, Bump(s), Acceptable 0,00

No pictures to display

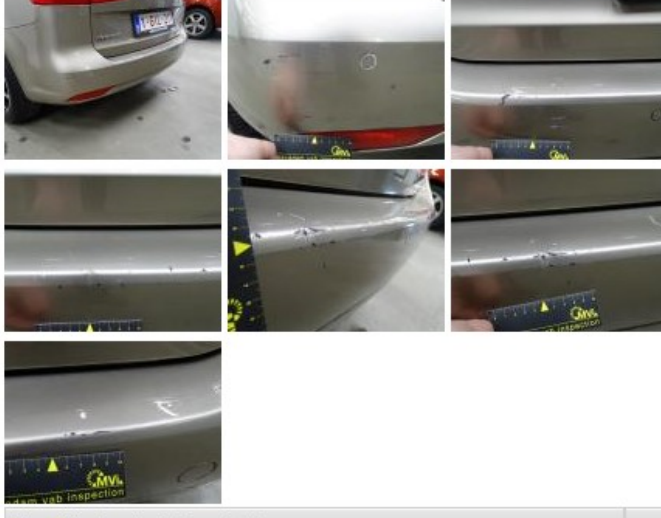
Alloy rim F R polished, Scratch(es), E - Replace 235,20



Backrest cover R R, Missing, E - Replace 49,00



Bumper R, Bump(s) and scratch(es), LI - Repair and paint (complete) 259,80



Door F L, Repaired, Acceptable 0,00

No pictures to display

Alloy rim F L polished, Scratch(es), E - Replace 235,20



Alloy rim R L polished, Scratch(es), E - Replace 235,20



Wing R L, Repaired, Acceptable 0,00

No pictures to display

Wing R L, Bump(s), Acceptable 0,00

No pictures to display