



SKODA Octavia: 1ECK468

| | | | |
|-------------------------|--------------------------|--------------|--|
| Vinnnumber: | TMBHT21Z4D2071327 | Versionname: | OCTAVIA COMBI GTec Ambition DPF 105PK |
| First Registrationdate: | 19/10/2012 | Fiscalpower: | |
| Expertise Mileage: | 172805 | Power Kw: | 77 |
| Bodytype: | Break | Body color: | Dark Blue |
| Gearbox: | MAN 5 VIT | Paint type: | Metalic |
| Transmission: | Front | Rims summer: | Aluminium |
| Fueltype: | Diesel | Oil level: | OK |
| Battery functioning: | Yes | Parking lot: | 3307 |
| Number of doors: | 5 | | |
| Number of seats: | 5 | | |
| Number head rests: | 5 | | |
| Rims summer: | Aluminium | | |
| Category: | Passenger Car | | |
| Oil level: | OK | | |

Options

| | |
|--------------------------------|------------------------------|
| Radio CD | Central consol F |
| Windows electric F | Luggage cover |
| Cruise Control | Rear parking sensors |
| Steering wheel multifunctional | |
| Radio multimedia | |
| Type of headlighting: | Headlighting Halogen |
| Type of GPS: | GPS big screen color |
| Type of Lining: | Lining fabrics |
| Type of climate control: | Autom climate control |

Limited Technical Inspection

| | | | |
|---------------------|------------|---------------------|------------|
| Power steering | Yes | Battery functioning | Yes |
| Airco functioning | OK | Sound engine | OK |
| Tires wear profile | OK | Clutch test | OK |
| Idle position | OK | Wiper fluid level | OK |
| Engine startingtime | OK | Lighting | OK |
| Exhaust gass | OK | Wiperblades | OK |
| Transmission | OK | | |
| Handbrake | OK | | |

Degree of wear

| | | | | |
|---------------|----------------------------------|--------------------------|-------|--------------------------|
| | 195/65/15/91 H LightMetal | | | |
| Summer tyres: | Fr.L. | Continental: 3 mm | Fr.R. | Continental: 3 mm |
| | Re.L. | Continental: 5 mm | Re.R. | Continental: 5 mm |

Assistance equipment

| | | | |
|-------------|------------|------|------------|
| Spare wheel | Yes | Jack | Yes |
|-------------|------------|------|------------|

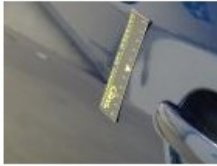
| | |
|-------------------------------|--------|
| Total cost ex VAT | 253,00 |
| Door R L, Bump(s), Acceptable | 0,00 |
| <i>No pictures to display</i> | |
| Bonnet, Stone chip(s), Paint | 0,00 |



| | |
|--|-------|
| Rear window, Scratch(es), Acceptable | 0,00 |
| <i>No pictures to display</i> | |
| Alloy rim F L, Scratch(es), Acceptable | 0,00 |
| <i>No pictures to display</i> | |
| Alloy rim F R, Scratch(es), LI - Repair and paint (complete) | 95,00 |



| | |
|---|-------|
| Door F L, Bump(s), PDR - Knock out without painting | 63,00 |
|---|-------|



| | |
|--|-------|
| Alloy rim R L, Scratch(es), LI - Repair and paint (complete) | 95,00 |
|--|-------|



| | |
|-----------------------------------|------|
| Bumper R, Scratch(es), Acceptable | 0,00 |
|-----------------------------------|------|

No pictures to display