



**RENAULT Scenic: 1DSN410**

Vinnumber:	<b>VF1JZ140647680982</b>	Versionname:	<b>SCENIC Energ.Expression</b>
First Registrationdate:	<b>13/08/2012</b>	Fiscalpower:	<b>110PK</b>
Expertise Mileage:	<b>148040</b>	Power Kw:	<b>81</b>
Bodytype:	<b>Hatchback</b>	Body color:	<b>Burgundy</b>
Gearbox:	<b>MAN 6 VIT</b>	Paint type:	<b>Metalic</b>
Transmission:	<b>Front</b>	Rims summer:	<b>Steel</b>
Fueltype:	<b>Diesel</b>	Oil level:	<b>OK</b>
Battery functioning:	<b>Yes</b>	Parking lot:	<b>1425</b>
Number of doors:	<b>5</b>		
Number of seats:	<b>2</b>		
Number head rests:	<b>5</b>		
Rims summer:	<b>Steel</b>		
Category:	<b>Passenger Car</b>		
Oil level:	<b>OK</b>		

**Options**

Radio CD	Luggage cover
Windows electric F	
Windows electric R	
Cruise Control	
Steering wheel multifunctional	
Radio multimedia	
Type of headlighting	<b>Headlighting Halogen</b>
Type of GPS	<b>GPS big screen color</b>
Type of Lining	<b>Lining fabrics</b>
Type of climate control	<b>Manual climate control</b>

**Limited Technical Inspection**

Power steering	<b>Yes</b>	Battery functioning	<b>Yes</b>
Airco functioning	<b>OK</b>	Sound engine	<b>OK</b>
Tires wear profile	<b>OK</b>	Clutch test	<b>OK</b>
Idle position	<b>OK</b>	Wiper fluid level	<b>OK</b>
Engine startingtime	<b>OK</b>	Lighting	<b>OK</b>
Exhaust gass	<b>OK</b>	Wiperblades	<b>OK</b>
Transmission	<b>OK</b>		
Handbrake	<b>OK</b>		

**Degree of wear**

	<b>205/60/16/91 V Steel</b>			
Winter tyres:	Fr.L.	<b>Dunlop: 6 mm</b>	Fr.R.	<b>Dunlop: 6 mm</b>
	Re.L.	<b>Dunlop: 7 mm</b>	Re.R.	<b>Dunlop: 7 mm</b>

**Assistance equipment**

Spare wheel	<b>Yes</b>	Jack	<b>Yes</b>
-------------	------------	------	------------

Total cost ex VAT	<b>2636,48</b>
-------------------	----------------

Wheel cover F L, Scratch(es), Acceptable	<b>0,00</b>
--	-------------

*No pictures to display*

Door F R, Bump(s) and scratch(es), LI - Repair and paint (complete)	<b>318,35</b>
---	---------------



Rear window, Scratch(es), E - Replace	<b>370,00</b>
---------------------------------------	---------------



Wing R R, Scratch(es), LI - Repair and paint (complete) 308,20



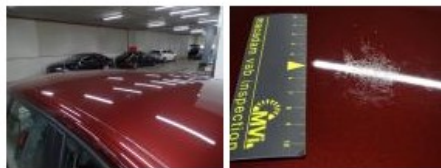
Door R R, Bump(s) and scratch(es), LI - Repair and paint (complete) 318,35



Bonnet, Scratch(es), LI - Repair and paint (complete) 290,08



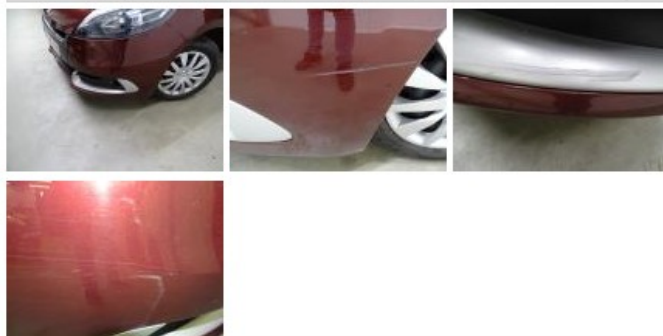
Roof, Chemical polution, LI - Repair and paint (complete) 481,50



Wing R L, Bump(s) and scratch(es), LI - Repair and paint (complete) 308,20



Front bumper, Scratch(es), LI - Repair and paint (complete) 211,80



Wheel cover F R, Scratch(es), E - Replace 30,00

