



## VOLVO V40: 1GGL684

Vinnumber:	<b>YV1MV8481E2133191</b>	Versionname:	
First Registrationdate:	<b>3/02/2014</b>	Fiscalpower:	
Expertise Mileage:	<b>77783</b>	Power Kw:	<b>84</b>
Bodytype:	<b>Break</b>	Body color:	<b>Dark Red</b>
Gearbox:	<b>MAN 6 VIT</b>	Paint type:	<b>Metalic</b>
Transmission:	<b>Front</b>	Rims summer:	<b>Aluminium</b>
Fueltype:	<b>Diesel</b>	Oil level:	<b>OK</b>
Battery functioning:	<b>Yes</b>	Parking lot:	<b>3223</b>
Number of doors:	<b>5</b>		
Number of seats:	<b>5</b>		
Number head rests:	<b>5</b>		
Rims summer:	<b>Aluminium</b>		
Category:	<b>Passenger Car</b>		
Oil level:	<b>OK</b>		
Registration Certificate Car (BE):	<b>Yes</b>		

## Options

Radio CD		Central consol F
GPS storage	<b>HD</b>	Luggage cover
GPS storage		Rear parking sensors
Windows electric F		
Windows electric R		
Cruise Control		
Steering wheel multifunctional		
Seats F heated		
Type of headlighting	<b>Headlighting Xenon</b>	
Type of GPS	<b>GPS big screen color</b>	
Type of Lining	<b>Lining fabrics</b>	
Type of climate control	<b>Manual climate control</b>	

## Limited Technical Inspection

Power steering	<b>Yes</b>	Battery functioning	<b>Yes</b>
Airco functioning	<b>OK</b>	Sound engine	<b>OK</b>
Tires wear profile	<b>OK</b>	Clutch test	<b>OK</b>
Idle position	<b>OK</b>	Wiper fluid level	<b>OK</b>
Engine startingtime	<b>OK</b>	Lighting	<b>OK</b>
Exhaust gass	<b>OK</b>	Wiperblades	<b>OK</b>
Transmission	<b>OK</b>		
Handbrake	<b>OK</b>		

## Degree of wear

	<b>205/55/16/91 T LightMetal</b>			
Winter tyres:	Fr.L.	<b>Michelin: 7 mm</b>	Fr.R.	<b>Michelin: 7 mm</b>
	Re.L.	<b>Michelin: 6 mm</b>	Re.R.	<b>Michelin: 6 mm</b>

## Assistance equipment

Spare wheel	<b>Yes</b>	Jack	<b>Yes</b>
-------------	------------	------	------------

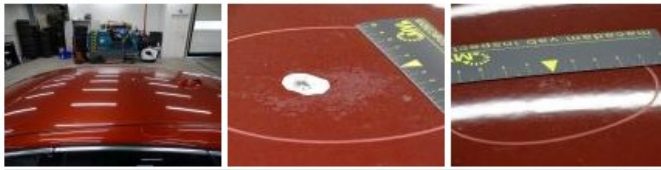
Total cost ex VAT	1247,14
Roof pillar L, Stain, Acceptable	0,00
<i>No pictures to display</i>	
Bumper R, Scratch(es), Acceptable	0,00
<i>No pictures to display</i>	
Sill outer L, Scratch(es), Acceptable	0,00
<i>No pictures to display</i>	
Door R R, Scratch(es), Acceptable	0,00
<i>No pictures to display</i>	
Alloy rim F R, Scratch(es), LI - Repair and paint (complete)	95,00



Door F L, Scratch(es), Acceptable 0,00

No pictures to display

Roof, Chemical polution, LI - Repair and paint (complete) 481,50



Alloy rim R R, Scratch(es), LI - Repair and paint (complete) 95,00



Bonnet, Chemical polution, LI - Repair and paint (complete) 290,08



Wing F R, Scratch(es), Acceptable 0,00

No pictures to display

Interior, Stain, Cleaning 75,00



Rear spoiler, Chemical polution, LI - Repair and paint (complete) 115,56



Front bumper, Repaired, Acceptable 0,00

No pictures to display

Alloy rim F L, Scratch(es), LI - Repair and paint (complete) 95,00



Roof pillar R, Stain, Acceptable 0,00

No pictures to display

