



**FORD Transit 300S: 1CME945**

Vinnnumber:	<b>WF05XXBDFSBP25680</b>	Versionname:	<b>TRANSIT 300S MBUS SWB Silv.DPF(EU5)100PK</b>
First Registrationdate:	<b>3/01/2012</b>	Fiscalpower:	
Expertise Mileage:	<b>143875</b>	Power Kw:	<b>74</b>
Bodytype:	<b>Bus</b>	Body color:	<b>White</b>
Gearbox:	<b>MAN 6 VIT</b>	Paint type:	<b>Opaque</b>
Transmission:	<b>Front</b>	Rims summer:	<b>Steel</b>
Fueltype:	<b>Diesel</b>	Oil level:	<b>OK</b>
Battery functioning:	<b>Yes</b>	Parking lot:	<b>3704</b>
Number of doors:	<b>4</b>		
Number of seats:	<b>9</b>		
Number head rests:	<b>8</b>		
Rims summer:	<b>Steel</b>		
Category:	<b>Passenger Car</b>		
Oil level:	<b>OK</b>		

**Options**

Radio CD	Central consol F
Windows electric F	Type of Tow bar <b>Tow bar fixed</b>
Cruise Control	
Steering wheel multifunctional	
Type of headlighting <b>Headlighting Halogen</b>	
Type of Lining <b>Lining fabrics</b>	
Type of climate control <b>Manual climate control</b>	

**Limited Technical Inspection**

Power steering	<b>Yes</b>	Battery functioning	<b>Yes</b>
Airco functioning	<b>OK</b>	Sound engine	<b>OK</b>
Tires wear profile	<b>OK</b>	Clutch test	<b>OK</b>
Idle position	<b>OK</b>	Wiper fluid level	<b>OK</b>
Engine startingtime	<b>OK</b>	Lighting	<b>OK</b>
Exhaust gass	<b>OK</b>	Wiperblades	<b>OK</b>
Transmission	<b>OK</b>		
Handbrake	<b>OK</b>		

**Degree of wear**

	<b>195/70/15/104 R Steel</b>			
Summer tyres:	Fr.L.	<b>Uniroyal: 5 mm</b>	Fr.R.	<b>Uniroyal: 5 mm</b>
	Re.L.	<b>Uniroyal: 8,5 mm</b>	Re.R.	<b>Uniroyal: 8,5 mm</b>

**Assistance equipment**

Spare wheel	<b>Yes</b>	Jack	<b>Yes</b>
-------------	------------	------	------------

<b>Total cost ex VAT</b>	<b>522,15</b>
Trunk door panel R, Scratch(es), Acceptable	0,00
<i>No pictures to display</i>	
Ignition key, Incomplete, Acceptable	0,00
<i>No pictures to display</i>	
Trunk door panel R, Bump(s), Acceptable	0,00
<i>No pictures to display</i>	
Internal Boot Lining L, Scratch(es), Acceptable	0,00



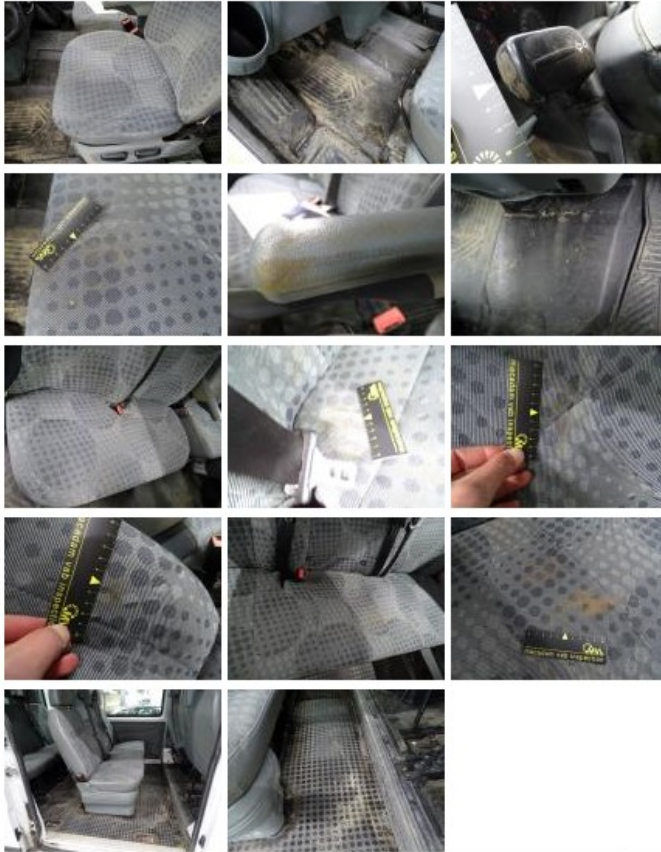
Headrest F R, Missing, E - Replace	45,00
------------------------------------	-------



Bumper grille, Bad repair, Acceptable 0,00



Interior, Dirty, Cleaning 150,00



Wing R L, Damaged, LI - Repair and paint (complete) 327,15



Trunk door R R, Bump(s), Acceptable 0,00

No pictures to display

Bodywork, Glue residues, Acceptable 0,00

No pictures to display