



VOLVO V40: 1ENM282

Vinnnumber:	YV1MV8461D2037123	Versionname:	V40 D2 Base 115PK
First Registrationdate:	30/01/2013	Fiscalpower:	
Expertise Mileage:	105454	Power Kw:	84
Bodytype:	Hatchback	Body color:	Dark Grey
Gearbox:	MAN 6 VIT	Paint type:	Metalic
Transmission:	Front	Rims summer:	Aluminium
Fueltype:	Diesel	Oil level:	OK
Battery functioning:	Yes	Parking lot:	1514
Number of doors:	5		
Number of seats:	5		
Number head rests:	5		
Rims summer:	Aluminium		
Category:	Passenger Car		
Oil level:	OK		

Options

Radio CD	Luggage cover
Windows electric F	Rear parking sensors
Windows electric R	
Cruise Control	
Steering wheel multifunctional	
Seats F heated	
Radio multimedia	
Type of headlighting	Headlighting Xenon
Type of GPS	GPS big screen color
Type of Lining	Lining leather
Type of climate control	Autom climate control

Limited Technical Inspection

Power steering	Yes	Battery functioning	Yes
Airco functioning	OK	Sound engine	OK
Tires wear profile	OK	Clutch test	OK
Idle position	OK	Wiper fluid level	OK
Engine startingtime	OK	Lighting	OK
Exhaust gass	OK	Wiperblades	OK
Transmission	OK		
Handbrake	OK		

Degree of wear

	205/50/17/93 V LightMetal			
Winter tyres:	Fr.L.	Bridgestone: 4 mm	Fr.R.	Bridgestone: 4 mm
	Re.L.	Bridgestone: 5 mm	Re.R.	Bridgestone: 5 mm

Assistance equipment

Repair kit	Yes	Compressor	Yes
Total cost ex VAT			1411,13
Front bumper, Scratch(es), Acceptable			0,00
<i>No pictures to display</i>			
Door R R, Bump(s), LI - Repair and paint (complete)			318,35



Roof, Chemical pollution, LI - Repair and paint (complete)	481,50
--	---------------



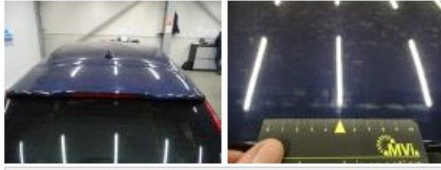
Alloy rim R R, Scratch(es), LI - Repair and paint (complete) 95,00



Centre console, Damaged, Smart repair 110,64



Rear spoiler, Scratch(es), LI - Repair and paint (complete) 115,56



Bonnet, Chemical pollution, LI - Repair and paint (complete) 290,08

