



BMW 1: 1GK1163

Vinnumber:	WBA1C91010J522187	Versionname:	1 HATCH 116d Eff.Dyn.Ed. 116PK
First Registrationdate:	3/03/2014	Fiscalpower:	
Expertise Mileage:	118711	Power Kw:	85
Bodytype:	Hatchback	Body color:	Black
Gearbox:	MAN 6 VIT	Paint type:	Metalic
Transmission:	Back	Rims summer:	Aluminium
Fueltype:	Diesel	Oil level:	OK
Battery functioning:	Yes	Parking lot:	4714
Number of doors:	5		
Number of seats:	5		
Number head rests:	5		
Rims summer:	Aluminium		
Category:	Passenger Car		
Oil level:	OK		
Registration Certificate Car (BE):	Yes		

Options

Radio CD	Central consol F
Windows electric F	Luggage cover
Windows electric R	Front parking sensors
Cruise Control	Rear parking sensors
Steering wheel multifunctional	
Seats F heated	
Radio multimedia	
Type of headlighting:	Headlighting Xenon
Type of GPS:	GPS big screen color
Type of Lining:	Lining leather
Type of climate control:	Autom climate control

Limited Technical Inspection

Power steering	Yes	Battery functioning	Yes
Airco functioning	OK	Sound engine	OK
Tires wear profile	OK	Clutch test	OK
Idle position	OK	Wiper fluid level	OK
Engine startingtime	OK	Lighting	OK
Exhaust gass	OK	Wiperblades	OK
Transmission	OK		
Handbrake	OK		

Degree of wear

	205/55/16/91 H LightMetal			
Winter tyres:	Fr.L.	Pirelli: 6 mm	Fr.R.	Pirelli: 6 mm
	Re.L.	Pirelli: 5 mm	Re.R.	Pirelli: 5 mm

Assistance equipment

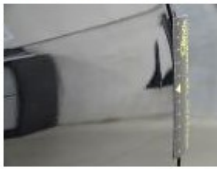
Repair kit	Yes	Compressor	Yes
------------	------------	------------	------------

Total cost ex VAT	978,23
-------------------	---------------

Wing R L, Bad repair, Paint	0,00
-----------------------------	-------------



Door R R, Bump(s), PDR - Knock out without painting	63,00
---	--------------



Wing R R, Scratch(es), Acceptable	0,00
-----------------------------------	------

No pictures to display

Bonnet, Chemical polution, LI - Repair and paint (complete)	290,08
---	--------



Bumper R, Scratch(es), LI - Repair and paint (complete)	211,80
---	--------



Alloy rim F R, Scratch(es), LI - Repair and paint (complete)	95,00
--	-------



Door F R, Bump(s), LI - Repair and paint (complete)	318,35
---	--------

