



BMW 2 ACTIVE TOURER: 1KAH906

Vinnnumber:	WBA2B31020V380901	Versionname:	1.5 216D ACTIVE TOURER
First Registrationdate:	19/03/2015	Fiscalpower:	
Expertise Mileage:	175870	Power Kw:	85
Bodytype:		Body color:	Grey
Gearbox:	MAN 6 VIT	Paint type:	Metalic
Transmission:	Front	Rims summer:	Aluminium
Fueltype:	Diesel	Oil level:	OK
Maintenance:	13000 KM OF 3:2018	Parking lot:	4620
Maintenance:	OK		
Battery functioning:	Yes		
Number of doors:	5		
Number of seats:	5		
Number head rests:	5		
Rims summer:	Aluminium		
Category:	Passenger Car		
Oil level:	OK		
Registration Certificate Car (BE):	Yes		

Options

Radio CD		Central consol F	
GPS storage	HD	Luggage cover	
GPS storage		Type of Tow bar	Tow bar removable
Windows electric F			
Windows electric R			
Cruise Control			
Steering wheel multifunctional			
Radio multimedia			
Type of headlighting	Headlighting Halogen		
Type of GPS	GPS big screen color		
Type of Lining	Lining fabrics		
Type of climate control	Manual climate control		
Adaptive cruise control			

Limited Technical Inspection

Power steering	Yes	Battery functioning	Yes
Airco functioning	OK	Sound engine	OK
Tires wear profile	OK	Clutch test	OK
Idle position	OK	Wiper fluid level	OK
Engine startingtime	OK	Lighting	OK
Exhaust gass	OK	Wiperblades	OK
Transmission	OK		
Handbrake	OK		

Degree of wear

	205/60/16/92 H LightMetal			
Winter tyres:	Fr.L.	Goodyear: 5 mm	Fr.R.	Goodyear: 5 mm
	Re.L.	Goodyear: 7 mm	Re.R.	Goodyear: 7 mm

Assistance equipment

Repair kit	Yes	Compressor	Yes
------------	------------	------------	------------

Total cost ex VAT 372,80

Alloy rim F R, Scratch(es), LI - Repair and paint (complete) 95,00



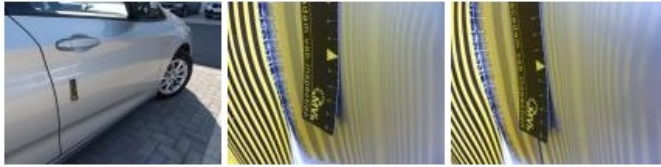
Bodywork, Not original part, Remove lettering 75,00



Alloy rim F L, Scratch(es), LI - Repair and paint (complete) 95,00



Door F R, Bump(s), PDR - Knock out without painting 82,80



Seat cover F R, Stain, Cleaning 25,00

