


**BMW 3: 1ESB994**

|                         |                          |              |                                   |
|-------------------------|--------------------------|--------------|-----------------------------------|
| Vinnumber:              | <b>WBA3K11020F849293</b> | Versionname: | <b>3 TOURING 318dA 136PK Aut.</b> |
| First Registrationdate: | <b>6/03/2013</b>         | Fiscalpower: |                                   |
| Expertise Mileage:      | <b>91875</b>             | Power Kw:    | <b>100</b>                        |
| Bodytype:               |                          | Body color:  | <b>Brown</b>                      |
| Gearbox:                | <b>Automatic</b>         | Paint type:  | <b>Metalic</b>                    |
| Transmission:           | <b>Back</b>              | Rims summer: | <b>Aluminium</b>                  |
| Fueltype:               | <b>Diesel</b>            | Oil level:   | <b>OK</b>                         |
| Battery functioning:    | <b>Yes</b>               | Parking lot: | <b>2732</b>                       |
| Number of doors:        | <b>5</b>                 |              |                                   |
| Number of seats:        | <b>5</b>                 |              |                                   |
| Number head rests:      | <b>2</b>                 |              |                                   |
| Rims summer:            | <b>Aluminium</b>         |              |                                   |
| Category:               | <b>Passenger Car</b>     |              |                                   |
| Oil level:              | <b>OK</b>                |              |                                   |

**Options**

|                                |                               |                      |
|--------------------------------|-------------------------------|----------------------|
| Radio CD                       |                               | Central consol F     |
| GPS storage                    |                               | Luggage cover        |
| GPS storage                    | <b>HD</b>                     | Rear parking sensors |
| Windows electric F             |                               |                      |
| Windows electric R             |                               |                      |
| Cruise Control                 |                               |                      |
| Steering wheel multifunctional |                               |                      |
| Radio multimedia               |                               |                      |
| Type of headlighting           | <b>Headlighting Halogen</b>   |                      |
| Type of GPS                    | <b>GPS big screen color</b>   |                      |
| Type of Lining                 | <b>Lining leather</b>         |                      |
| Type of climate control        | <b>Manual climate control</b> |                      |

**Limited Technical Inspection**

|                     |            |                     |               |
|---------------------|------------|---------------------|---------------|
| Power steering      | <b>Yes</b> | Battery functioning | <b>Yes</b>    |
| Airco functioning   | <b>OK</b>  | Sound engine        | <b>OK</b>     |
| Tires wear profile  | <b>OK</b>  | Clutch test         | <b>NOT OK</b> |
| Idle position       | <b>OK</b>  | Wiper fluid level   | <b>OK</b>     |
| Engine startingtime | <b>OK</b>  | Lighting            | <b>OK</b>     |
| Exhaust gass        | <b>OK</b>  | Wiperblades         | <b>OK</b>     |
| Transmission        | <b>OK</b>  |                     |               |
| Handbrake           | <b>OK</b>  |                     |               |

**Degree of wear**

|               |                                  |                      |       |                      |
|---------------|----------------------------------|----------------------|-------|----------------------|
|               | <b>205/60/16/92 H LightMetal</b> |                      |       |                      |
| Winter tyres: | Fr.L.                            | <b>Pirelli: 6 mm</b> | Fr.R. | <b>Pirelli: 6 mm</b> |
|               | Re.L.                            | <b>Pirelli: 5 mm</b> | Re.R. | <b>Pirelli: 5 mm</b> |

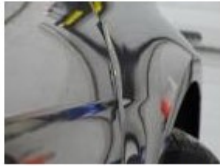
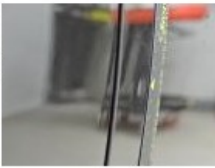
**Assistance equipment**

|   |            |            |               |
|---|------------|------------|---------------|
| Repair kit  | <b>Yes</b> | Compressor | <b>Yes</b>    |
| Total cost ex VAT                                   |            |            | <b>248,40</b> |
| Door F R, Bump(s), Acceptable                       |            |            | <b>0,00</b>   |
| <i>No pictures to display</i>                       |            |            |               |
| Door R R, Bump(s), Acceptable                       |            |            | <b>0,00</b>   |
| <i>No pictures to display</i>                       |            |            |               |
| Front bumper, Scratch(es), Acceptable               |            |            | <b>0,00</b>   |
| <i>No pictures to display</i>                       |            |            |               |
| Wing R R, Bump(s), Acceptable                       |            |            | <b>0,00</b>   |
| <i>No pictures to display</i>                       |            |            |               |
| Wing R R, Bump(s), PDR - Knock out without painting |            |            | <b>63,00</b>  |



Door F R, Bump(s), PDR - Knock out without painting

102,60



Door R R, Bump(s), PDR - Knock out without painting

82,80



Bumper R, Scratch(es), Acceptable

0,00

*No pictures to display*

Door R L, Scratch(es), Acceptable

0,00

*No pictures to display*