


**BMW 3: 1GFV576**

Vinnumber:	<b>WBA3Y11080D448549</b>	Versionname:	<b>3 GRAN TURISMO 318d</b>
First Registrationdate:	<b>28/01/2014</b>	Fiscalpower:	<b>136PK</b>
Expertise Mileage:	<b>134239</b>	Power Kw:	<b>100</b>
Bodytype:	<b>Hatchback</b>	Body color:	<b>Grey</b>
Gearbox:	<b>MAN 6 VIT</b>	Paint type:	<b>Metalic</b>
Transmission:	<b>Back</b>	Rims summer:	<b>Aluminium</b>
Fueltype:	<b>Diesel</b>	Oil level:	<b>OK</b>
Maintenance:	<b>NOT OK</b>	Parking lot:	<b>4129</b>
Maintenance:	<b>02 / 2018</b>		
Battery functioning:	<b>Yes</b>		
Number of doors:	<b>5</b>		
Number of seats:	<b>5</b>		
Number head rests:	<b>5</b>		
Rims summer:	<b>Aluminium</b>		
Category:	<b>Passenger Car</b>		
Oil level:	<b>OK</b>		
Registration Certificate Car (BE):	<b>Yes</b>		

**Options**

Radio CD		Central consol F
GPS storage	<b>HD</b>	Luggage cover
GPS storage		Rear parking sensors
Windows electric F		
Windows electric R		
Cruise Control		
Steering wheel multifunctional		
Type of headlighting	<b>Headlighting Halogen</b>	
Type of GPS	<b>GPS big screen color</b>	
Type of Lining	<b>Lining artificial leather</b>	
Type of climate control	<b>Autom climate control</b>	

**Limited Technical Inspection**

Power steering	<b>Yes</b>	Battery functioning	<b>Yes</b>
Airco functioning	<b>OK</b>	Sound engine	<b>OK</b>
Tires wear profile	<b>OK</b>	Clutch test	<b>OK</b>
Idle position	<b>OK</b>	Wiper fluid level	<b>OK</b>
Engine startingtime	<b>OK</b>	Lighting	<b>OK</b>
Exhaust gass	<b>OK</b>	Wiperblades	<b>OK</b>
Transmission	<b>OK</b>		
Handbrake	<b>OK</b>		

**Degree of wear**

	<b>225/55/17/101 W LightMetal</b>			
Summer tyres:	Fr.L.	<b>Vredestein: 6 mm</b>	Fr.R.	<b>Vredestein: 6 mm</b>
	Re.L.	<b>Michelin: 3 mm</b>	Re.R.	<b>Michelin: 3 mm</b>

**Assistance equipment**

Repair kit	<b>Yes</b>	Compressor	<b>Yes</b>
------------	------------	------------	------------

Total cost ex VAT	<b>901,80</b>
-------------------	---------------

Engine protective plate, Tear, E - Replace	<b>109,00</b>
--	---------------



Alloy rim R R, Scratch(es), LI - Repair and paint (complete)	<b>95,00</b>
--	--------------



Maintenance, Maintenance, Execute 0,00

No pictures to display

Windscreen, Stone chip(s), Acceptable 0,00

No pictures to display

Wing F R, Bad repair, Paint 0,00



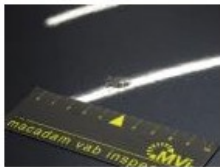
Alloy rim R L, Scratch(es), Acceptable 0,00

No pictures to display

Wing R L, Scratch(es), Acceptable 0,00

No pictures to display

Roof, Chemical polution, LI - Repair and paint (complete) 577,80



Seat cover F L, Tear, Acceptable 0,00



Boot cover, Stain, Cleaning 25,00



Door R R, Bad repair, Paint 0,00



Alloy rim F R, Scratch(es), LI - Repair and paint (complete) 95,00



Wing R R, Bad repair, Paint 0,00



Door F R, Bad repair, Paint 0,00

