


**BMW 4 Gran Coupe: MA5383**

Vinnumber:	<b>WBA4B71060D958133</b>	Versionname:	<b>4 GRAN COUPE 420dXA</b>
First Registrationdate:	<b>20/11/2014</b>	Fiscalpower:	<b>184PK Aut.</b>
Expertise Mileage:	<b>200636</b>	Power Kw:	<b>135</b>
Bodytype:		Body color:	<b>Black</b>
Gearbox:	<b>Automatic</b>	Paint type:	<b>Metalic</b>
Transmission:	<b>4 Weel</b>	Rims summer:	<b>Aluminium</b>
Fueltype:	<b>Diesel</b>	Oil level:	<b>OK</b>
Battery functioning:	<b>Yes</b>	Parking lot:	<b>3821</b>
Number of doors:	<b>5</b>		
Number of seats:	<b>5</b>		
Number head rests:	<b>4</b>		
Rims summer:	<b>Aluminium</b>		
Category:	<b>Passenger Car</b>		
Oil level:	<b>OK</b>		

**Options**

Radio CD	Central consol F
Windows electric F	Rear parking sensors
Windows electric R	
Cruise Control	
Steering wheel multifunction	
Seats F heated	
Radio multimedia	
Type of headlighting	<b>Headlighting Xenon</b>
Type of GPS	<b>GPS big screen color</b>
Type of Lining	<b>Lining leather</b>
Type of climate control	<b>Autom climate control</b>

**Limited Technical Inspection**

Power steering	<b>Yes</b>	Battery functioning	<b>Yes</b>
Airco functioning	<b>OK</b>	Sound engine	<b>OK</b>
Tires wear profile	<b>OK</b>	Clutch test	<b>OK</b>
Idle position	<b>OK</b>	Wiper fluid level	<b>OK</b>
Engine startingtime	<b>OK</b>	Lighting	<b>OK</b>
Exhaust gass	<b>OK</b>	Wiperblades	<b>OK</b>
Transmission	<b>OK</b>		
Handbrake	<b>OK</b>		

**Degree of wear**

	<b>225/50/17/94 H LightMetal</b>			
Winter tyres:	Fr.L.	<b>Continental: 7 mm</b>	Fr.R.	<b>Continental: 7 mm</b>
	Re.L.	<b>Continental: 6 mm</b>	Re.R.	<b>Continental: 6 mm</b>

**Assistance equipment**

Repair kit	<b>Yes</b>	Compressor	<b>Yes</b>
------------	------------	------------	------------

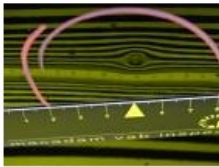
Total cost ex VAT	556,89
Door F L, Bump(s), PDR - Knock out without painting	63,00



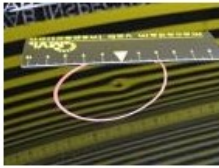
Door F R, Bump(s), Acceptable	0,00
-------------------------------	------

*No pictures to display*

Door R R, Bump(s), PDR - Knock out without painting	63,00
---	-------



Roof, Bump(s), PDR - Knock out without painting 82,80



Windscreen, Repaired, Acceptable 0,00



Bumper R, Scratch(es), Acceptable 0,00

No pictures to display

Bonnet, Bump(s) and scratch(es), LI - Repair and paint (complete) 348,09

