



|                                   |                          |              |  |
|-----------------------------------|--------------------------|--------------|--|
| <b>RENAULT Clio: 1GIC311</b>      |                          |              |  |
| Vinnnumber:                       | <b>VF15RJL0H50186492</b> | Versionname: | <b>CLIO IV BER e-Expression St&amp;St 90PK</b> |
| First Registrationdate:           | <b>13/02/2014</b>        | Fiscalpower: |  |
| Expertise Mileage:                | <b>120125</b>            | Power Kw:    | <b>66</b>                                      |
| Bodytype:                         |                          | Body color   | <b>Light Grey</b>                              |
| Gearbox:                          | <b>MAN 5 VIT</b>         | Paint type   | <b>Metalic</b>                                 |
| Transmission:                     |                          | Rims summer  | <b>Steel</b>                                   |
| Fueltype:                         | <b>Diesel</b>            | Oil level    | <b>OK</b>                                      |
| Battery functioning               | <b>Yes</b>               | Parking lot  | <b>4515</b>                                    |
| Number of doors                   | <b>5</b>                 |              |  |
| Number of seats                   | <b>5</b>                 |              |  |
| Number head rests                 | <b>4</b>                 |              |  |
| Rims summer                       | <b>Steel</b>             |              |  |
| Category                          | <b>Passenger Car</b>     |              |  |
| Oil level                         | <b>OK</b>                |              |  |
| Registration Certificate Car (BE) | <b>Yes</b>               |              |  |

|                                |                               |
|--------------------------------|-------------------------------|
| <b>Options</b>                 |                               |
| Windows electric F             | Luggage cover                 |
| Cruise Control                 |                               |
| Steering wheel multifunctional |                               |
| Radio multimedia               |                               |
| Type of headlighting           | <b>Headlighting Halogen</b>   |
| Type of GPS                    | <b>GPS big screen color</b>   |
| Type of Lining                 | <b>Lining fabrics</b>         |
| Type of climate control        | <b>Manual climate control</b> |

|                                     |            |                     |            |
|-------------------------------------|------------|---------------------|------------|
| <b>Limited Technical Inspection</b> |            |                     |            |
| Power steering                      | <b>Yes</b> | Battery functioning | <b>Yes</b> |
| Airco functioning                   | <b>OK</b>  | Sound engine        | <b>OK</b>  |
| Tires wear profile                  | <b>OK</b>  | Clutch test         | <b>OK</b>  |
| Idle position                       | <b>OK</b>  | Wiper fluid level   | <b>OK</b>  |
| Engine startingtime                 | <b>OK</b>  | Lighting            | <b>OK</b>  |
| Exhaust gass                        | <b>OK</b>  | Wiperblades         | <b>OK</b>  |
| Transmission                        | <b>OK</b>  |                     |            |
| Handbrake                           | <b>OK</b>  |                     |            |

|                       |                             |                      |       |                      |
|-----------------------|-----------------------------|----------------------|-------|----------------------|
| <b>Degree of wear</b> |                             |                      |       |                      |
|                       | <b>185/65/15/88 T Steel</b> |                      |       |                      |
| Winter tyres:         | Fr.L.                       | <b>Pirelli: 7 mm</b> | Fr.R. | <b>Pirelli: 7 mm</b> |
|                       | Re.L.                       | <b>Pirelli: 8 mm</b> | Re.R. | <b>Pirelli: 8 mm</b> |

|  |            |               |            |
|--|------------|---------------|------------|
| <b>Assistance equipment</b>                      |            |               |            |
| Repair kit                                       | <b>Yes</b> | Compressor    | <b>Yes</b> |
| <b>Total cost ex VAT</b>                         |            | <b>283,00</b> |            |
| <b>Bumper R, Scratch(es), Acceptable</b>         |            | <b>0,00</b>   |            |
| <i>No pictures to display</i>                    |            |               |            |
| <b>Wheel cover F R, Scratch(es), E - Replace</b> |            | <b>24,00</b>  |            |



|  |              |
|--|--------------|
| <b>Wing R R, Bump(s), PDR - Knock out without painting</b> | <b>63,00</b> |
|--|--------------|



Wheel cover F L, Scratch(es), E - Replace 24,00



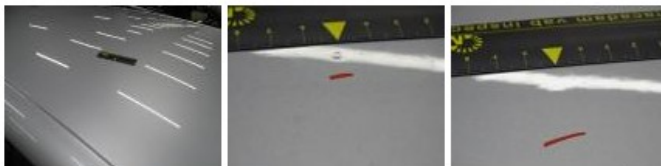
Protection plate M, Tear, E - Replace 74,00



Interior, Dirty, Cleaning 50,00



Roof, Bad repair, Acceptable 0,00



Wheel cover R R, Scratch(es), E - Replace 24,00



Bonnet, Stone chip(s), Acceptable 0,00

No pictures to display

Wheel cover R L, Scratch(es), E - Replace 24,00

