



MERCEDES C: 1DML248

| | | | |
|-------------------------|--------------------------|--------------|--|
| Vinnnumber: | WDD2042821F941813 | Versionname: | C BRE 250CDI 4M BE St/St 204PK Aut. |
| First Registrationdate: | 22/06/2012 | Fiscalpower: | |
| Expertise Mileage: | 186592 | Power Kw: | 150 |
| Bodytype: | Break | Body color: | Dark Grey |
| Gearbox: | Automatic | Paint type: | Metalic |
| Transmission: | Back | Rims summer: | Aluminium |
| Fueltype: | Diesel | Oil level: | OK |
| Battery functioning: | Yes | Parking lot: | 3531 |
| Number of doors: | 5 | | |
| Number of seats: | 5 | | |
| Number head rests: | 5 | | |
| Rims summer: | Aluminium | | |
| Category: | Passenger Car | | |
| Oil level: | OK | | |

Options

| | |
|------------------------------|------------------------------|
| Radio CD | Seats electric F R |
| Windows electric F | Sun Roof electric |
| Windows electric R | Panoramic roof |
| Cruise Control | Central consol F |
| Steering wheel multifunction | Luggage cover |
| Seats F heated | Front parking sensors |
| Radio multimedia | Rear parking sensors |
| Type of headlighting | Headlighting Xenon |
| Type of GPS | GPS big screen color |
| Type of Lining | Lining leather |
| Type of climate control | Autom climate control |

Limited Technical Inspection

| | | | |
|---------------------|------------|---------------------|------------|
| Power steering | Yes | Battery functioning | Yes |
| Airco functioning | OK | Sound engine | OK |
| Tires wear profile | OK | Clutch test | OK |
| Idle position | OK | Wiper fluid level | OK |
| Engine startingtime | OK | Lighting | OK |
| Exhaust gass | OK | Wiperblades | OK |
| Transmission | OK | | |
| Handbrake | OK | | |

Degree of wear

| | | | | |
|---------------|----------------------------------|--------------------------|-------|--------------------------|
| | 205/55/16/91 W LightMetal | | | |
| Summer tyres: | Fr.L. | Continental: 4 mm | Fr.R. | Continental: 4 mm |
| | Re.L. | Continental: 3 mm | Re.R. | Continental: 3 mm |

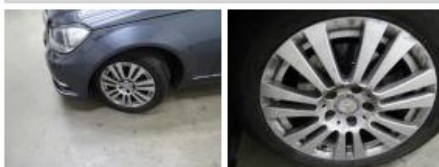
Assistance equipment

| | | | |
|--------------------|------------|------|------------|
| Spare tyre compact | Yes | Jack | Yes |
|--------------------|------------|------|------------|

| | |
|--|--------|
| Total cost ex VAT | 762,02 |
| Alloy rim R L, Scratch(es), LI - Repair and paint (complete) | 95,00 |



| | |
|--|-------|
| Alloy rim F L, Scratch(es), LI - Repair and paint (complete) | 95,00 |
|--|-------|



| | |
|---------------------------------------|------|
| Front bumper, Scratch(es), Acceptable | 0,00 |
|---------------------------------------|------|

No pictures to display

| | |
|---|--------|
| Door F L, Bump(s) and scratch(es), LI - Repair and paint (complete) | 382,02 |
|---|--------|



| | |
|-----------------------------------|------|
| Bumper R, Scratch(es), Acceptable | 0,00 |
|-----------------------------------|------|

No pictures to display

| | |
|--|-------|
| Alloy rim F R, Scratch(es), LI - Repair and paint (complete) | 95,00 |
|--|-------|



| | |
|--|-------|
| Alloy rim R R, Scratch(es), LI - Repair and paint (complete) | 95,00 |
|--|-------|

