


SKODA Octavia: 1ESU915

Vinnnumber:	TMBHT21Z6D2128465	Versionname:	OCTAVIA COMBI GTec Ambition DPF 105PK
First Registrationdate:	12/03/2013	Fiscalpower:	
Expertise Mileage:	117341	Power Kw:	77
Bodytype:	Break	Body color:	Silver
Gearbox:	MAN 5 VIT	Paint type:	Metalic
Transmission:	Front	Rims summer:	Aluminium
Fueltype:	Diesel	Oil level:	OK
Battery functioning:	Yes	Parking lot:	3330
Number of doors:	5		
Number of seats:	5		
Number head rests:	5		
Rims summer:	Aluminium		
Category:	Passenger Car		
Oil level:	OK		

Options

Radio CD	Central consol F
Windows electric F	Luggage cover
Windows electric R	Front parking sensors
Cruise Control	Rear parking sensors
Steering wheel multifunctional	
Seats F heated	
Radio multimedia	
Type of headlighting	Headlighting Halogen
Type of GPS	GPS big screen color
Type of Lining	Lining fabrics
Type of climate control	Autom climate control

Limited Technical Inspection

Power steering	Yes	Battery functioning	Yes
Airco functioning	OK	Sound engine	OK
Tires wear profile	OK	Clutch test	OK
Idle position	OK	Wiper fluid level	OK
Engine startingtime	OK	Lighting	OK
Exhaust gass	OK	Wiperblades	OK
Transmission	OK		
Handbrake	OK		

Degree of wear

	205/55/16/91 H LightMetal			
Summer tyres:	Fr.L.	Continental: 4 mm	Fr.R.	Continental: 4 mm
	Re.L.	Continental: 5 mm	Re.R.	Continental: 5 mm

Assistance equipment

Spare wheel	Yes	Jack	Yes
-------------	------------	------	------------

Total cost ex VAT	901,35
Roof, Bump(s), PDR - Knock out without painting	63,00



Rearview mirror housing L, Scratch(es), Acceptable	0,00
--	------

No pictures to display

Alloy rim F R, Scratch(es), Acceptable	0,00
--	------

No pictures to display

Front bumper, Scratch(es), Acceptable	0,00
---------------------------------------	------

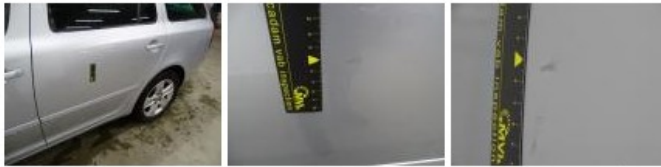
No pictures to display

Rearview mirror housing R, Scratch(es), Acceptable	0,00
--	------

No pictures to display

no pictures to display

Door R L, Bump(s) and scratch(es), LI - Repair and paint (complete) 318,35



Bumper R, Scratch(es), LI - Repair and paint (complete) 211,80



Wing R L, Scratch(es), LI - Repair and paint (complete) 308,20

