



**VOLKSWAGEN GOLF VII: 1NCX070**

Vinnnumber:	<b>WVWZZZAUZGW181184</b>	Versionname:	<b>1.6 TDI 66KW TRENDLINE</b>
First Registrationdate:	<b>25/01/2016</b>	Fiscalpower:	
Expertise Mileage:	<b>86240</b>	Power Kw:	<b>66</b>
Bodytype:		Body color:	<b>Black</b>
Gearbox:	<b>MAN 5 VIT</b>	Paint type:	<b>Metalic</b>
Transmission:	<b>Front</b>	Rims summer:	<b>Steel</b>
Fueltype:	<b>Diesel</b>	Oil level:	<b>OK</b>
Battery functioning:	<b>Yes</b>	Parking lot:	<b>2229</b>
Number of doors:	<b>5</b>		
Number of seats:	<b>5</b>		
Number head rests:	<b>5</b>		
Rims summer:	<b>Steel</b>		
Category:	<b>Passenger Car</b>		
Oil level:	<b>OK</b>		
Registration Certificate Car (BE):	<b>Yes</b>		

**Options**

Radio CD	Luggage cover
Windows electric F	
Cruise Control	
Steering wheel multifunctional	
Type of headlighting:	<b>Headlighting Halogen</b>
Type of Lining:	<b>Lining fabrics</b>
Type of climate control:	<b>Manual climate control</b>

**Limited Technical Inspection**

Power steering	<b>Yes</b>	Battery functioning	<b>Yes</b>
Airco functioning	<b>OK</b>	Sound engine	<b>OK</b>
Tires wear profile	<b>OK</b>	Clutch test	<b>OK</b>
Idle position	<b>OK</b>	Wiper fluid level	<b>OK</b>
Engine startingtime	<b>OK</b>	Lighting	<b>OK</b>
Exhaust gass	<b>OK</b>	Wiperblades	<b>OK</b>
Transmission	<b>OK</b>		
Handbrake	<b>OK</b>		

**Degree of wear**

	<b>195/65/15/91 H Steel</b>			
Summer tyres:	Fr.L.	<b>Bridgestone: 5 mm</b>	Fr.R.	<b>Bridgestone: 5 mm</b>
	Re.L.	<b>Bridgestone: 5 mm</b>	Re.R.	<b>Bridgestone: 5 mm</b>

**Assistance equipment**

Spare tyre compact	<b>Yes</b>	Jack	<b>Yes</b>
--------------------	------------	------	------------

Total cost ex VAT	<b>261,12</b>
-------------------	---------------

Wheel cover F R, Missing, E - Replace	<b>30,00</b>
---------------------------------------	--------------



Front bumper, Scratch(es), It - Spot repair	<b>115,56</b>
---	---------------

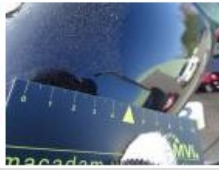




Bumper R, Scratch(es), Acceptable	0,00
-----------------------------------	------

*No pictures to display*

Rearview mirror housing R, Crack, LI - Repair and paint (complete)	115,56
--	--------



Bumper corner R L, Scratch(es), Acceptable	0,00
--	------

*No pictures to display*

Wheel cover R R, Scratch(es), Acceptable	0,00
--	------

*No pictures to display*