


**OPEL Zafira: 1DBL659**

|                         |                          |              |  |
|-------------------------|--------------------------|--------------|--|
| Vinnumber:              | <b>WOLPE9EM9C2072063</b> | Versionname: | <b>ZAFIRA TOURER<br/>ecoFL.Cosmo St/St.130PK</b> |
| First Registrationdate: | <b>2/04/2012</b>         | Fiscalpower: |  |
| Expertise Mileage:      | <b>185932</b>            | Power Kw:    | <b>96</b>  |
| Bodytype:               | <b>MPV</b>               | Body color:  | <b>Brown</b>                                     |
| Gearbox:                | <b>MAN 6 VIT</b>         | Paint type:  | <b>Metalic</b>                                   |
| Transmission:           | <b>Front</b>             | Rims summer: | <b>Aluminium</b>                                 |
| Fueltype:               | <b>Diesel</b>            | Oil level:   | <b>OK</b>  |
| Battery functioning:    | <b>Yes</b>               | Parking lot: | <b>3106</b>                                      |
| Number of doors:        | <b>5</b>                 |              |  |
| Number of seats:        | <b>5</b>                 |              |  |
| Number head rests:      | <b>5</b>                 |              |  |
| Rims summer:            | <b>Aluminium</b>         |              |  |
| Category:               | <b>Passenger Car</b>     |              |  |
| Oil level:              | <b>OK</b>                |              |  |

**Options**

|                                |                                       |                      |
|--------------------------------|---------------------------------------|----------------------|
| Radio CD                       | Central consol F                      |                      |
| Windows electric F             | Luggage cover                         |                      |
| Windows electric R             | Front parking sensors                 |                      |
| Cruise Control                 | Rear parking sensors                  |                      |
| Steering wheel multifunctional | Type of Tow bar                       | <b>Tow bar fixed</b> |
| Type of headlighting           | <b>Headlighting Halogen</b>           |                      |
| Type of Lining                 | <b>Lining semi-artificial leather</b> |                      |
| Type of climate control        | <b>Autom climate control</b>          |                      |

**Limited Technical Inspection**

|                     |            |                     |            |
|---------------------|------------|---------------------|------------|
| Power steering      | <b>Yes</b> | Battery functioning | <b>Yes</b> |
| Airco functioning   | <b>OK</b>  | Sound engine        | <b>OK</b>  |
| Tires wear profile  | <b>OK</b>  | Clutch test         | <b>OK</b>  |
| Idle position       | <b>OK</b>  | Wiper fluid level   | <b>OK</b>  |
| Engine startingtime | <b>OK</b>  | Lighting            | <b>OK</b>  |
| Exhaust gass        | <b>OK</b>  | Wiperblades         | <b>OK</b>  |
| Transmission        | <b>OK</b>  |                     |            |
| Handbrake           | <b>OK</b>  |                     |            |

**Degree of wear**

|               |                                  |                          |       |                          |
|---------------|----------------------------------|--------------------------|-------|--------------------------|
|               | <b>225/50/17/94 H LightMetal</b> |                          |       |                          |
| Winter tyres: | Fr.L.                            | <b>Michelin: 6 mm</b>    | Fr.R. | <b>Michelin: 6 mm</b>    |
|               | Re.L.                            | <b>Continental: 6 mm</b> | Re.R. | <b>Continental: 6 mm</b> |

**Assistance equipment**

|            |            |            |            |
|------------|------------|------------|------------|
| Repair kit | <b>Yes</b> | Compressor | <b>Yes</b> |
|------------|------------|------------|------------|

**Total cost ex VAT** 2632,86

**Door panel F L, Hole, E - Replace** 114,00

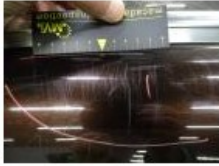
**Front bumper, Scratch(es), LI - Repair and paint (complete)**

211,80





Roof pillar L, Bump(s) and scratch(es), LI - Repair and paint (complete) 316,18



Alloy rim F L, Scratch(es), LI - Repair and paint (complete) 95,00

No pictures to display

Door panel R L, Scratch(es), Acceptable 0,00

No pictures to display

Door panel F L, Worn, Acceptable 0,00

No pictures to display

Rearview mirror housing L, Scratch(es), LI - Repair and paint (complete) 115,56



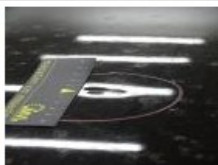
Wing R R, Scratch(es), Acceptable 0,00

No pictures to display

Rearview mirror housing R, Scratch(es), LI - Repair and paint (complete) 115,56



Roof, Bump(s) and scratch(es), LI - Repair and paint (complete) 0,00



Door panel R R, Scratch(es), Acceptable 0,00

No pictures to display

Door R R, Scratch(es), Acceptable 0,00

No pictures to display

Door R L, Bump(s) and scratch(es), LI - Repair and paint (complete) 318,35



Glove compartment lid, Not functioning (well), Acceptable 0,00



Wing F R, Bump(s), PDR - Knock out without painting 111,00



Wing F L, Scratch(es), LI - Repair and paint (complete) 220,18



Internal Boot Lining R, Missing, E - Replace 50,00



Windscreen, Stone chip(s), Windscreen repair 0,00



Trunk lid covering R, Scratch(es), Acceptable 0,00

No pictures to display

Sill outer R, Damaged, LI - Repair and paint (complete) 0,00



Door F R, Scratch(es), Acceptable 0,00

No pictures to display

Door F L, Bump(s) and scratch(es), LI - Repair and paint (complete) 318,35



Interior, Stain, Cleaning 50,00





Alloy rim R R, Scratch(es), LI - Repair and paint (complete) 95,00



Bonnet, Chemical polution, LI - Repair and paint (complete) 290,08



Bumper R, Bump(s) and scratch(es), LI - Repair and paint (complete) 211,80

