



## SKODA Octavia: 1ELB253

Vinnumber:	<b>TMBHT21Z5D2095099</b>	Versionname:	<b>OCTAVIA COMBI GTec Ambition DPF 105PK</b>
First Registrationdate:	<b>10/01/2013</b>	Fiscalpower:	
Expertise Mileage:	<b>129291</b>	Power Kw:	<b>77</b>
Bodytype:		Body color:	<b>Grey</b>
Gearbox:	<b>MAN 5 VIT</b>	Paint type:	<b>Metalic</b>
Transmission:	<b>Front</b>	Rims summer:	<b>Aluminium</b>
Fueltype:	<b>Diesel</b>	Oil level:	<b>OK</b>
Maintenance:	<b>117873 KM OF 6:2018</b>	Parking lot:	<b>2104</b>
Maintenance:	<b>NOT OK</b>		
Battery functioning:	<b>Yes</b>		
Number of doors:	<b>5</b>		
Number of seats:	<b>5</b>		
Number head rests:	<b>5</b>		
Rims summer:	<b>Aluminium</b>		
Category:	<b>Passenger Car</b>		
Oil level:	<b>OK</b>		

## Options

Radio CD		Central consol F
GPS storage	<b>HD</b>	Luggage cover
GPS storage		Front parking sensors
Windows electric F		Rear parking sensors
Windows electric R		
Cruise Control		
Steering wheel multifunctional		
Radio multimedia		
Type of headlighting	<b>Headlighting LED</b>	
Type of GPS	<b>GPS big screen color</b>	
Type of Lining	<b>Lining fabrics</b>	
Type of climate control	<b>Autom climate control</b>	
Adaptive cruise control		

## Limited Technical Inspection

Power steering	<b>Yes</b>	Battery functioning	<b>Yes</b>
Airco functioning	<b>OK</b>	Sound engine	<b>OK</b>
Tires wear profile	<b>OK</b>	Clutch test	<b>OK</b>
Idle position	<b>OK</b>	Wiper fluid level	<b>OK</b>
Engine startingtime	<b>OK</b>	Lighting	<b>OK</b>
Exhaust gass	<b>OK</b>	Wiperblades	<b>OK</b>
Transmission	<b>OK</b>		
Handbrake	<b>OK</b>		

## Degree of wear

	<b>205/55/16/91 T LightMetal</b>			
Winter tyres:	Fr.L.	<b>Michelin: 5 mm</b>	Fr.R.	<b>Michelin: 5 mm</b>
	Re.L.	<b>Michelin: 7 mm</b>	Re.R.	<b>Michelin: 7 mm</b>

## Assistance equipment

Spare wheel	<b>Yes</b>	Jack	<b>Yes</b>
-------------	------------	------	------------

Total cost ex VAT	<b>613,76</b>
-------------------	---------------

Rearview mirror housing R, Scratch(es), LI - Repair and paint (complete)	<b>115,56</b>
--	---------------



Alloy rim R R, Scratch(es), LI - Repair and paint (complete)	<b>95,00</b>
--	--------------



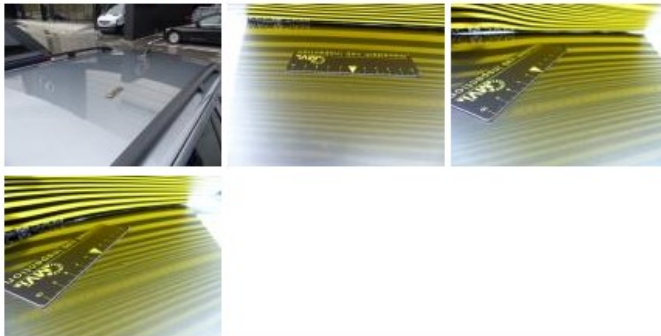
Wing R R, Scratch(es), LI - Repair and paint (complete) 308,20



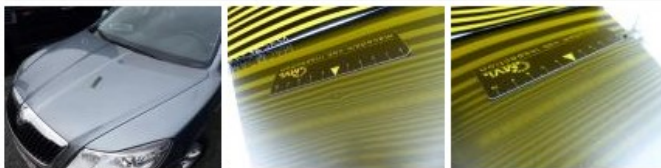
Maintenance, Maintenance, P - Check 0,00



Roof, Hail damage, PDR - Hail 0,00



Bonnet, Hail damage, PDR - Hail 0,00



Alloy rim F R, Scratch(es), LI - Repair and paint (complete) 95,00

