



## VOLKSWAGEN Passat: 1GIV276

Vinnumber:	<b>WVWZZZ3CZEE084263</b>	Versionname:	<b>PASSAT VAR Comfortline BMT 105PK</b>
First Registrationdate:	<b>19/02/2014</b>	Fiscalpower:	
Expertise Mileage:	<b>168014</b>	Power Kw:	<b>77</b>
Bodytype:		Body color:	<b>Grey</b>
Gearbox:	<b>MAN 6 VIT</b>	Paint type:	<b>Metalic</b>
Transmission:	<b>Front</b>	Rims summer:	<b>Aluminium</b>
Fueltype:	<b>Diesel</b>	Oil level:	<b>OK</b>
Maintenance:	<b>163885</b>	Parking lot:	<b>1229</b>
Maintenance:	<b>OK</b>		
Maintenance:	<b>8/01/2018</b>		
Battery functioning:	<b>Yes</b>		
Number of doors:	<b>5</b>		
Number of seats:	<b>5</b>		
Number head rests:	<b>5</b>		
Rims summer:	<b>Aluminium</b>		
Category:	<b>Passenger Car</b>		
Oil level:	<b>OK</b>		
Registration Certificate Car (BE):	<b>Yes</b>		

## Options

Radio CD		Seats electric F L	
GPS storage	<b>HD</b>	Sun Roof electric	
GPS storage		Panoramic roof	
Windows electric F		Central consol F	
Windows electric R		Luggage cover	
Cruise Control		Front parking sensors	
Steering wheel multifunctional		Rear parking sensors	
Seats F heated		Type of Tow bar	<b>Tow bar fixed</b>
Radio multimedia			
Type of headlighting	<b>Headlighting Halogen</b>		
Type of GPS	<b>GPS big screen color</b>		
Type of Lining	<b>Lining leather</b>		
Type of climate control	<b>Autom climate control</b>		
Adaptive cruise control			

## Limited Technical Inspection

Power steering	<b>Yes</b>	Battery functioning	<b>Yes</b>
Airco functioning	<b>OK</b>	Sound engine	<b>OK</b>
Tires wear profile	<b>OK</b>	Clutch test	<b>OK</b>
Idle position	<b>OK</b>	Wiper fluid level	<b>OK</b>
Engine startingtime	<b>OK</b>	Lighting	<b>OK</b>
Exhaust gass	<b>OK</b>	Wiperblades	<b>OK</b>
Transmission	<b>OK</b>		
Handbrake	<b>OK</b>		

## Degree of wear

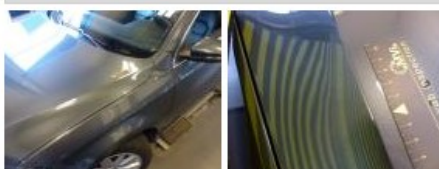
	<b>215/55/16/97 H LightMetal</b>			
Winter tyres:	Fr.L.	<b>Michelin: 6 mm</b>	Fr.R.	<b>Michelin: 6 mm</b>
	Re.L.	<b>Michelin: 6 mm</b>	Re.R.	<b>Michelin: 6 mm</b>

## Assistance equipment

Spare wheel	<b>Yes</b>	Jack	<b>Yes</b>
-------------	------------	------	------------

Total cost ex VAT	683,03
-------------------	--------

Bonnet, Bump(s), PDR - Knock out without painting	63,00
---	-------



Door R R, Bump(s) and scratch(es), LI - Repair and paint (complete)	318,35
---	--------



Tailgate, Scratch(es), LI - Repair and paint (complete) 301,68

