



## VOLVO S60: 1FWP286

Vinnumber:	<b>YV1FS8481E2298624</b>	Versionname:	<b>S60 BER D2 Kinetic 115PK</b>
First Registrationdate:	<b>20/11/2013</b>	Fiscalpower:	
Expertise Mileage:	<b>64426</b>	Power Kw:	<b>84</b>
Bodytype:		Body color:	<b>Blue</b>
Gearbox:	<b>MAN 6 VIT</b>	Paint type:	<b>Metalic</b>
Transmission:	<b>Front</b>	Rims summer:	<b>Aluminium</b>
Fueltype:	<b>Diesel</b>	Oil level:	<b>OK</b>
Maintenance:	<b>SERVICE IN 15625KM 8M</b>	Parking lot:	<b>1620</b>
Maintenance:	<b>OK</b>		
Battery functioning:	<b>Yes</b>		
Number of doors:	<b>4</b>		
Number of seats:	<b>5</b>		
Number head rests:	<b>5</b>		
Rims summer:	<b>Aluminium</b>		
Category:	<b>Passenger Car</b>		
Oil level:	<b>OK</b>		
Registration Certificate Car (BE):	<b>Yes</b>		

## Options

Radio CD		Central consol F	
GPS storage	<b>HD</b>	Rear parking sensors	
GPS storage		Type of Tow bar	<b>Tow bar removable</b>
Windows electric F			
Windows electric R			
Cruise Control			
Steering wheel multifunctional			
Radio multimedia			
Type of headlighting	<b>Headlighting Halogen</b>		
Type of GPS	<b>GPS big screen color</b>		
Type of Lining	<b>Lining fabrics</b>		
Type of climate control	<b>Autom climate control</b>		

## Limited Technical Inspection

Power steering	<b>Yes</b>	Battery functioning	<b>Yes</b>
Airco functioning	<b>OK</b>	Sound engine	<b>OK</b>
Tires wear profile	<b>OK</b>	Clutch test	<b>OK</b>
Idle position	<b>OK</b>	Wiper fluid level	<b>OK</b>
Engine startingtime	<b>OK</b>	Lighting	<b>OK</b>
Exhaust gass	<b>OK</b>	Wiperblades	<b>OK</b>
Transmission	<b>OK</b>		
Handbrake	<b>OK</b>		

## Degree of wear

	<b>205/60/16/96 H LightMetal</b>			
Winter tyres:	Fr.L.	<b>Goodyear: 7 mm</b>	Fr.R.	<b>Goodyear: 7 mm</b>
	Re.L.	<b>Goodyear: 5 mm</b>	Re.R.	<b>Goodyear: 4 mm</b>

## Assistance equipment

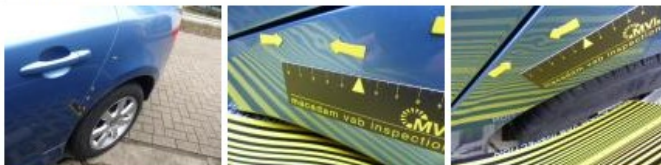
Repair kit	<b>Yes</b>	Compressor	<b>Yes</b>
------------	------------	------------	------------

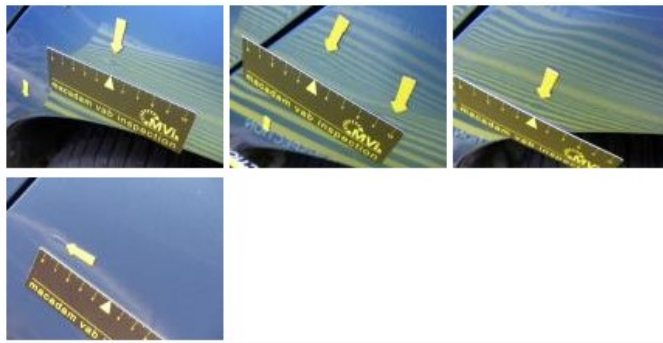
Total cost ex VAT	2449,76
-------------------	---------

Door R L, Scratch(es), Acceptable	0,00
-----------------------------------	------

*No pictures to display*

Wing R L, Bump(s) and scratch(es), LI - Repair and paint (complete)	308,20
---	--------





Alloy rim F L, Scratch(es), Acceptable 0,00

No pictures to display

Sill trim R, Scratch(es), LI - Repair and paint (complete) 310,50



Alloy rim F R, Scratch(es), LI - Repair and paint (complete) 95,00



Interior, No damage, Acceptable 0,00



Bumper Trim F, Scratch(es), E - Replace 212,41



Front bumper, Scratch(es), LI - Repair and paint (complete) 211,80



Door R R, Scratch(es), LI - Repair and paint (complete) 318,35





Alloy rim R R, Scratch(es), LI - Repair and paint (complete) 95,00



Door F R, Bump(s) and scratch(es), LI - Repair and paint (complete) 318,35



Wing R R, Bump(s), Acceptable 0,00

No pictures to display

Door F L, Scratch(es), LI - Repair and paint (complete) 318,35



Seat cover R, Stain, Cleaning 25,00



Seat cover F R, Stain, Cleaning 25,00



Wing F R, Scratch(es), Acceptable 0,00

No pictures to display

Bumper R, Scratch(es), LI - Repair and paint (complete) 211,80

