


BMW 1: 1ELO261

Vinnnumber:	WBA1C91050J506784	Versionname:	1 HATCH 116d Eff.Dyn.Ed. 116PK
First Registrationdate:	15/01/2013	Fiscalpower:	
Expertise Mileage:	92550	Power Kw:	85
Bodytype:		Body color	Anthracite
Gearbox:	MAN 6 VIT	Paint type	Metalic
Transmission:	Back	Rims summer	Aluminium
Fueltype:	Diesel	Oil level	OK
Battery functioning	Yes	Parking lot	4308
Number of doors	5		
Number of seats	5		
Number head rests	5		
Rims summer	Aluminium		
Category	Passenger Car		
Oil level	OK		

Options

Radio CD		Central consol F
GPS storage	DVD	Luggage cover
GPS storage		
Windows electric F		
Windows electric R		
Steering wheel multifunctional		
Radio multimedia		
Type of headlighting	Headlighting Halogen	
Type of GPS	GPS big screen color	
Type of Lining	Lining fabrics	
Type of climate control	Manual climate control	

Limited Technical Inspection

Power steering	Yes	Battery functioning	Yes
Airco functioning	OK	Sound engine	OK
Tires wear profile	OK	Clutch test	OK
Idle position	OK	Wiper fluid level	OK
Engine startingtime	OK	Lighting	OK
Exhaust gass	OK	Wiperblades	OK
Transmission	OK		
Handbrake	OK		

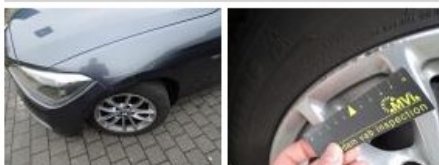
Degree of wear

	205/55/16/91 T LightMetal			
Winter tyres:	Fr.L.	Michelin: 6 mm	Fr.R.	Michelin: 6 mm
	Re.L.	Michelin: 5 mm	Re.R.	Michelin: 5 mm

Assistance equipment

Repair kit	Yes	Compressor	Yes
------------	------------	------------	------------

Total cost ex VAT	848,98
Door F L, Scratch(es), Acceptable	0,00
<i>No pictures to display</i>	
Alloy rim F L, Scratch(es), Acceptable	0,00



Bumper R, Scratch(es), Acceptable	0,00
<i>No pictures to display</i>	
Wing F L, Scratch(es), LI - Repair and paint (complete)	220,18



Alloy rim R L, Scratch(es), LI - Repair and paint (complete)

95,00



Alloy rim F R, Scratch(es), LI - Repair and paint (complete)

95,00



Front bumper, Scratch(es), LI - Repair and paint (complete)

211,80



Alloy rim R R, Scratch(es), LI - Repair and paint (complete)

95,00



Tyre R R, Damaged, E - Replace

132,00



Bonnet, Scratch(es), Acceptable

0,00

No pictures to display