


BMW 5: 1ESB982

Vinnumber:	WBAMX11000DY13278	Versionname:	5 TOURING 520dA Start/Stop 163PK aut
First Registrationdate:	6/03/2013	Fiscalpower:	
Expertise Mileage:	183354	Power Kw:	120
Bodytype:	Break	Body color	Beige
Gearbox:	Automatic	Paint type	Metalic
Transmission:		Rims summer	Aluminium
Fueltype:	Diesel	Oil level	OK
Battery functioning	Yes	Parking lot	4115
Number of doors	5		
Number of seats	5		
Number head rests	5		
Rims summer	Aluminium		
Category	Passenger Car		
Oil level	OK		

Options

Radio CD	Sun Roof electric
Windows electric F	Panoramic roof
Windows electric R	Central consol F
Cruise Control	Luggage cover
Steering wheel multifunction	Front parking sensors
Seats F heated	Rear parking sensors
Radio multimedia	
Type of headlighting	Headlighting Halogen
Type of GPS	GPS big screen color
Type of Lining	Lining leather
Type of climate control	Autom climate control

Limited Technical Inspection

Power steering	Yes	Battery functioning	Yes
Airco functioning	OK	Sound engine	OK
Tires wear profile	OK	Clutch test	OK
Idle position	OK	Wiper fluid level	OK
Engine startingtime	OK	Lighting	OK
Exhaust gass	OK	Wiperblades	OK
Transmission	OK		
Handbrake	OK		

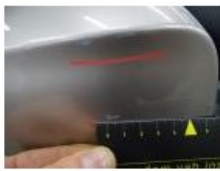
Degree of wear

	225/55/17/97 H LightMetal			
Winter tyres:	Fr.L.	Michelin: 7 mm	Fr.R.	Michelin: 7 mm
	Re.L.	Michelin: 7 mm	Re.R.	Michelin: 7 mm

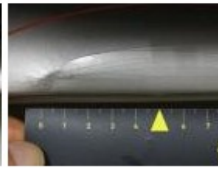
Assistance equipment

Repair kit	Yes	Compressor	Yes
Total cost ex VAT			1098,78
Rearview mirror housing L, Scratch(es), Acceptable			0,00
<i>No pictures to display</i>			
Rearview mirror housing R, Scratch(es), LI - Repair and paint (complete)			115,56





Front bumper, Bump(s) and scratch(es), LI - Repair and paint (complete) 254,16



Wing R R, Rust, LI - Repair and paint (complete) 369,84



Tailgate, Scratch(es), Acceptable 0,00

No pictures to display

Alloy rim R L, Scratch(es), LI - Repair and paint (complete) 95,00



Roof pillar R, Bump(s) and scratch(es), LI - Repair and paint (complete) 264,22

