


MERCEDES A: 1GCV701

| | | | |
|------------------------------------|--------------------------|--------------|-----------------------|
| Vinnumber: | WDD1760111J214732 | Versionname: | A 160 CDI 90PK |
| First Registrationdate: | 3/01/2014 | Fiscalpower: | |
| Expertise Mileage: | 100364 | Power Kw: | 66 |
| Bodytype: | | Body color: | Purple |
| Gearbox: | MAN 6 VIT | Paint type: | Metalic |
| Transmission: | Front | Rims summer: | Steel |
| Fueltype: | Diesel | Oil level: | OK |
| Maintenance: | A1 DANS 276 J | Parking lot: | 2404 |
| Maintenance: | OK | | |
| Battery functioning: | Yes | | |
| Number of doors: | 5 | | |
| Number of seats: | 5 | | |
| Number head rests: | 5 | | |
| Rims summer: | Steel | | |
| Category: | Passenger Car | | |
| Oil level: | OK | | |
| Registration Certificate Car (BE): | Yes | | |

Options

| | |
|--------------------------------|-------------------------------|
| Radio CD | Central consol F |
| GPS storage | Luggage cover |
| GPS storage | HD |
| Windows electric F | |
| Windows electric R | |
| Cruise Control | |
| Steering wheel multifunctional | |
| Radio multimedia | |
| Type of headlighting | Headlighting Halogen |
| Type of GPS | GPS big screen color |
| Type of Lining | Lining fabrics |
| Type of climate control | Manual climate control |

Limited Technical Inspection

| | | | |
|---------------------|------------|---------------------|------------|
| Power steering | Yes | Battery functioning | Yes |
| Airco functioning | OK | Sound engine | OK |
| Tires wear profile | OK | Clutch test | OK |
| Idle position | OK | Wiper fluid level | OK |
| Engine startingtime | OK | Lighting | OK |
| Exhaust gass | OK | Wiperblades | OK |
| Transmission | OK | | |
| Handbrake | OK | | |

Degree of wear

| | | | | |
|---------------|-----------------------------|-----------------------|-------|-----------------------|
| | 195/65/15/91 T Steel | | | |
| Winter tyres: | Fr.L. | Michelin: 6 mm | Fr.R. | Michelin: 6 mm |
| | Re.L. | Michelin: 6 mm | Re.R. | Michelin: 6 mm |

Assistance equipment

| | | | |
|------------|------------|------------|------------|
| Repair kit | Yes | Compressor | Yes |
|------------|------------|------------|------------|

Total cost ex VAT 839,80

Wheel cover F R, Scratch(es), E - Replace 30,00

Front bumper, Scratch(es), LI - Repair and paint (complete)
211,80



Wheel cover R L, Scratch(es), Acceptable 0,00

No pictures to display

Wing R L, Bump(s) and scratch(es), LI - Repair and paint (complete) 356,20



Wing R R, Bump(s), Acceptable 0,00

No pictures to display

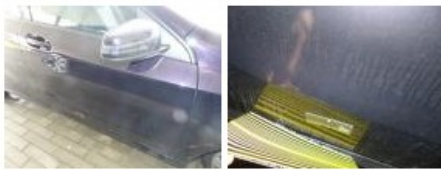
Roof, Scratch(es), Acceptable 0,00

No pictures to display

Door F L, Bump(s), Acceptable 0,00

No pictures to display

Door F R, Bad repair, P - Check 0,00



Bumper R, Scratch(es), LI - Repair and paint (complete) 211,80



Wheel cover R R, Scratch(es), E - Replace 30,00

