



**FORD Transit 280M: 478BYP**

Vinnnumber:	<b>WF05XTTTF5AU54975</b>	Versionname:	<b>TRANSIT 280M B/F2C MWB Silverline 85PK</b>
First Registrationdate:	<b>18/08/2010</b>	Fiscalpower:	
Expertise Mileage:	<b>189656</b>	Power Kw:	<b>63</b>
Bodytype:	<b>Transporter</b>	Body color:	<b>White</b>
Gearbox:	<b>MAN 5 VIT</b>	Paint type:	<b>Metalic</b>
Transmission:		Rims summer:	<b>Steel</b>
Fueltype:	<b>Diesel</b>	Oil level:	<b>OK</b>
Battery functioning:	<b>Yes</b>	Parking lot:	<b>LCV19</b>
Number of doors:	<b>5</b>		
Number of seats:	<b>6</b>		
Number head rests:	<b>6</b>		
Rims summer:	<b>Steel</b>		
Category:	<b>Light Commercial Vehicle</b>		
Oil level:	<b>OK</b>		

**Options**

Radio CD	
Windows electric F	
Cruise Control	
Steering wheel multifunctional	
Type of headlighting	<b>Headlighting Halogen</b>
Type of Lining	<b>Lining fabrics</b>
Type of climate control	<b>Manual climate control</b>

**Limited Technical Inspection**

Power steering	<b>Yes</b>	Battery functioning	<b>Yes</b>
Airco functioning	<b>OK</b>	Sound engine	<b>OK</b>
Tires wear profile	<b>OK</b>	Clutch test	<b>OK</b>
Idle position	<b>OK</b>	Wiper fluid level	<b>OK</b>
Engine startingtime	<b>OK</b>	Lighting	<b>OK</b>
Exhaust gass	<b>OK</b>	Wiperblades	<b>OK</b>
Transmission	<b>OK</b>		
Handbrake	<b>OK</b>		

**Degree of wear**

	<b>195/70/15/104 R Steel</b>			
Summer tyres:	Fr.L.	<b>Uniroyal: 6 mm</b>	Fr.R.	<b>Uniroyal: 6 mm</b>
	Re.L.	<b>Bridgestone: 9 mm</b>	Re.R.	<b>Bridgestone: 9 mm</b>

**Assistance equipment**

Spare wheel	<b>Yes</b>
-------------	------------

Total cost ex VAT	1684,59
Wheel cover F R, Missing, E - Replace	22,50



Bodywork, Not original part, Acceptable	0,00
---	------

*No pictures to display*

Internal Boot Lining L, Scratch(es), Smart repair	110,64
---	--------



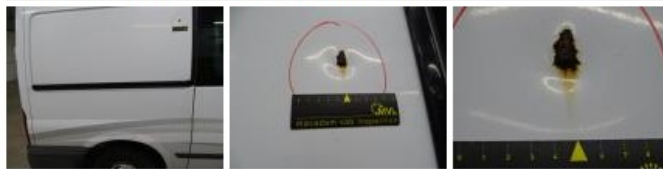
Trunk door R L, Bump(s) and scratch(es), It - Spot repair	115,56
---	--------



Trunk door R R, Bump(s) and scratch(es), It - Spot repair 115,56



Wing R R, Rust, LI - Repair and paint (complete) 231,15



Seat cover R L, Hole, Smart repair 64,32



Bonnet, Rust, LI - Repair and paint (complete) 217,56



Internal Boot Lining R, Hole, Smart repair 110,64



Wheel cover R R, Missing, E - Replace 22,50



Wing R L, Bump(s) and scratch(es), LI - Repair and paint (complete) 231,15



Wheel cover F L, Missing, E - Replace 22,50



Wing F R, Bump(s), LI - Repair and paint (complete)	165,13
---	--------



Wheel cover R L, Missing, E - Replace	22,50
---------------------------------------	-------



Sill outer L, Rust, LI - Repair and paint (complete)	232,88
--	--------

