


FORD S Max: 1EPJ578

Vinnumber:	WF0SXXGBWSCS76255	Versionname:	S-MAX Titanium DPF
First Registrationdate:	14/02/2013	Fiscalpower:	136PK
Expertise Mileage:	89359	Power Kw:	100
Bodytype:	MPV	Body color:	Silver
Gearbox:	MAN 6 VIT	Paint type:	Metalic
Transmission:	Front	Rims summer:	Aluminium
Fueltype:	Diesel	Oil level:	OK
Battery functioning:	Yes	Parking lot:	2323
Number of doors:	5		
Number of seats:	5		
Number head rests:	5		
Rims summer:	Aluminium		
Category:	Passenger Car		
Oil level:	OK		

Options

Radio CD	Seats electric F L
Windows electric F	Seats electric F R
Windows electric R	Central consol F
Cruise Control	Luggage cover
Steering wheel multifunctional	Front parking sensors
Radio multimedia	Rear parking sensors
Type of headlighting	Headlighting Halogen
Type of GPS	GPS big screen color
Type of Lining	Lining leather
Type of climate control	Autom climate control

Limited Technical Inspection

Power steering	Yes	Battery functioning	Yes
Airco functioning	OK	Sound engine	OK
Tires wear profile	OK	Clutch test	OK
Idle position	OK	Wiper fluid level	OK
Engine startingtime	OK	Lighting	OK
Exhaust gass	OK	Wiperblades	OK
Transmission	OK		
Handbrake	OK		

Degree of wear

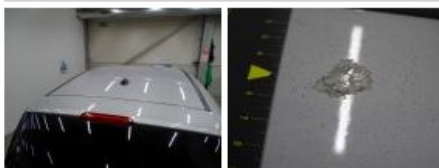
	225/50/17/98 H LightMetal			
Winter tyres:	Fr.L.	Bridgestone: 5 mm	Fr.R.	Bridgestone: 5 mm
	Re.L.	Bridgestone: 6 mm	Re.R.	Bridgestone: 6 mm

Assistance equipment

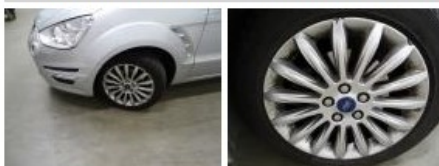
Repair kit	Yes	Compressor	Yes
------------	------------	------------	------------

Total cost ex VAT	946,76
-------------------	--------

Rear spoiler, Chemical polution, LI - Repair and paint (complete)	115,56
---	--------



Alloy rim F L, Scratch(es), LI - Repair and paint (complete)	95,00
--	-------



Alloy rim R L, Scratch(es), LI - Repair and paint (complete)	95,00
--	-------



Roof, Chemical polution, LI - Repair and paint (complete)	577,80
---	--------



Bumper grille, Bad repair, Paint	0,00
----------------------------------	------



Internal Boot Lining R, Stain, Cleaning	25,00
---	-------



Supplementary brake lights, Crack, E - Replace	38,40
--	-------

