



**MERCEDES CLA: 1GAH740**

Vinnumber:	<b>WDD1173011N061071</b>	Versionname:	
First Registrationdate:	<b>5/12/2013</b>	Fiscalpower:	
Expertise Mileage:	<b>114257</b>	Power Kw:	<b>100</b>
Bodytype:	<b>Berline</b>	Body color:	<b>Grey</b>
Gearbox:	<b>MAN 6 VIT</b>	Paint type:	<b>Metalic</b>
Transmission:	<b>Front</b>	Rims summer:	<b>Aluminium</b>
Fueltype:	<b>Diesel</b>	Oil level:	<b>OK</b>
Battery functioning:	<b>Yes</b>	Parking lot:	<b>3233</b>
Number of doors:	<b>4</b>		
Number of seats:	<b>5</b>		
Number head rests:	<b>5</b>		
Rims summer:	<b>Aluminium</b>		
Category:	<b>Passenger Car</b>		
Oil level:	<b>OK</b>		
Registration Certificate Car (BE):	<b>Yes</b>		

**Options**

Radio CD	Central consol F
GPS storage	
GPS storage	<b>HD</b>
Windows electric F	
Windows electric R	
Cruise Control	
Steering wheel multifunctional	
Seats F heated	
Type of headlighting	<b>Headlighting Halogen</b>
Type of GPS	<b>GPS big screen color</b>
Type of Lining	<b>Lining leather</b>
Type of climate control	<b>Autom climate control</b>

**Limited Technical Inspection**

Power steering	<b>Yes</b>	Battery functioning	<b>Yes</b>
Airco functioning	<b>OK</b>	Sound engine	<b>OK</b>
Tires wear profile	<b>OK</b>	Clutch test	<b>OK</b>
Idle position	<b>OK</b>	Wiper fluid level	<b>OK</b>
Engine startingtime	<b>OK</b>	Lighting	<b>OK</b>
Exhaust gass	<b>OK</b>	Wiperblades	<b>OK</b>
Transmission	<b>OK</b>		
Handbrake	<b>OK</b>		

**Degree of wear**

	<b>205/55/16/91 T LightMetal</b>			
Winter tyres:	Fr.L.	<b>Michelin: 6 mm</b>	Fr.R.	<b>Michelin: 6 mm</b>
	Re.L.	<b>Bridgestone: 4 mm</b>	Re.R.	<b>Bridgestone: 4 mm</b>

**Assistance equipment**

Repair kit	<b>Yes</b>	Compressor	<b>Yes</b>
------------	------------	------------	------------

Total cost ex VAT	<b>295,00</b>
-------------------	---------------

Seat cover F L, Worn, Acceptable	<b>0,00</b>
----------------------------------	-------------



Alloy rim R L, Scratch(es), LI - Repair and paint (complete)	<b>95,00</b>
--	--------------



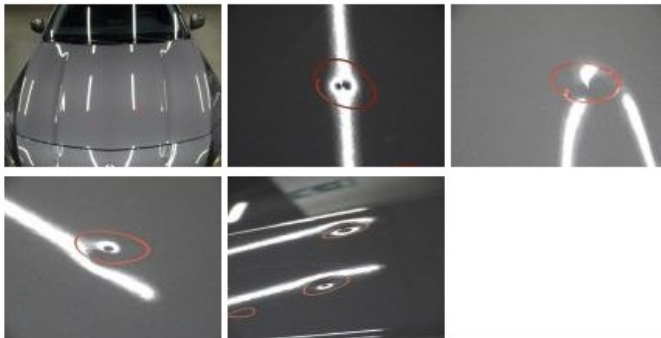
Front bumper, Bad repair, Paint 0,00



Roof pillar L, Bad repair, Paint 0,00



Bonnet, Hail damage, PDR - Hail 200,00



Wing F R, Scratch(es), Acceptable 0,00

No pictures to display

Wing R L, Bad repair, Paint 0,00

