



**MERCEDES Viano MWB: 1ENU549**

Vinnnumber:	<b>WDF63981313793079</b>	Versionname:	<b>VIANO MWB Ambiente BlueEFF 136PK</b>
First Registrationdate:	<b>1/02/2013</b>	Fiscalpower:	
Expertise Mileage:	<b>156589</b>	Power Kw:	<b>100</b>
Bodytype:	<b>MPV</b>	Body color:	<b>Black</b>
Gearbox:	<b>MAN 6 VIT</b>	Paint type:	<b>Metalic</b>
Transmission:		Rims summer:	<b>Aluminium</b>
Fueltype:	<b>Diesel</b>	Oil level:	<b>OK</b>
Battery functioning:	<b>Yes</b>	Parking lot:	<b>1223</b>
Number of doors:	<b>5</b>		
Number of seats:	<b>6</b>		
Number head rests:	<b>6</b>		
Rims summer:	<b>Aluminium</b>		
Category:	<b>Passenger Car</b>		
Oil level:	<b>OK</b>		

**Options**

Radio CD		Central consol F	
Windows electric F		Front parking sensors	
Windows electric R		Rear parking sensors	
Radio multimedia		Type of Tow bar	<b>Tow bar fixed</b>
Type of headlighting	<b>Headlighting Xenon</b>		
Type of GPS	<b>GPS big screen color</b>		
Type of Lining	<b>Lining leather</b>		
Type of climate control	<b>Autom climate control</b>		

**Limited Technical Inspection**

Power steering	<b>Yes</b>	Battery functioning	<b>Yes</b>
Airco functioning	<b>OK</b>	Sound engine	<b>OK</b>
Tires wear profile	<b>OK</b>	Clutch test	<b>OK</b>
Idle position	<b>OK</b>	Wiper fluid level	<b>OK</b>
Engine startingtime	<b>OK</b>	Lighting	<b>OK</b>
Exhaust gass	<b>OK</b>	Wiperblades	<b>OK</b>
Transmission	<b>OK</b>		
Handbrake	<b>OK</b>		

**Degree of wear**

	<b>245/45/18/100 V LightMetal</b>			
Winter tyres:	Fr.L.	<b>Michelin: 6 mm</b>	Fr.R.	<b>Michelin: 6 mm</b>
	Re.L.	<b>Michelin: 5 mm</b>	Re.R.	<b>Michelin: 5 mm</b>

**Assistance equipment**

Spare wheel	<b>Yes</b>
-------------	------------

Total cost ex VAT	<b>2765,78</b>
-------------------	----------------

Bumper R, Bump(s) and scratch(es), Le - Replace and paint	<b>651,00</b>
---	---------------





Alloy rim F L polished, Scratch(es), LI - Repair and paint (complete) 95,00



Wing R R, Scratch(es), LI - Repair and paint (complete) 308,20



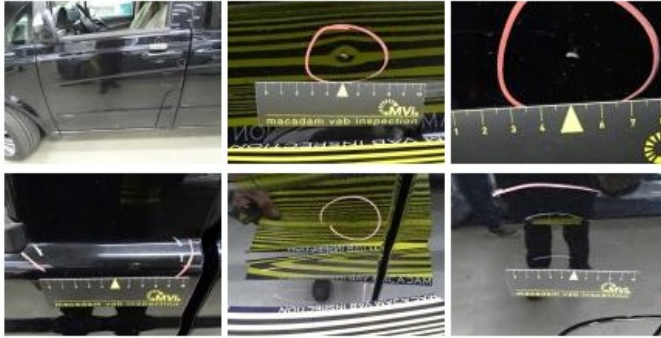
Alloy rim R L polished, Scratch(es), LI - Repair and paint (complete) 95,00



Door R L, Scratch(es), Acceptable 0,00

No pictures to display

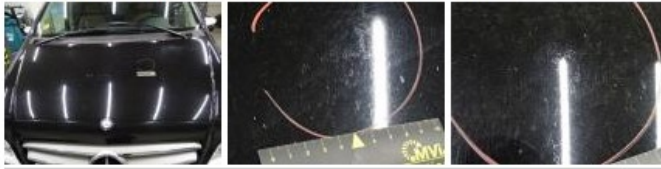
Door F L, Bump(s) and scratch(es), LI - Repair and paint (complete) 318,35



Door R R, Bump(s) and scratch(es), LI - Repair and paint (complete) 318,35



Bonnet, Chemical polution, LI - Repair and paint (complete) 290,08



Door R L, Bump(s), Acceptable	0,00
<i>No pictures to display</i>	
Alloy rim F R polished, Scratch(es), LI - Repair and paint (complete)	95,00
Tailgate, Scratch(es), Acceptable	0,00
<i>No pictures to display</i>	
Alloy rim R R polished, Scratch(es), LI - Repair and paint (complete)	95,00
Glove box cover, Damaged, E - Replace	288,00
Wing R L, Scratch(es), Acceptable	0,00
<i>No pictures to display</i>	
Front bumper, Scratch(es), LI - Repair and paint (complete)	211,80
Door F R, Bump(s), Acceptable	0,00
<i>No pictures to display</i>	
Rear window, Scratch(es), E - Replace	0,00