



<b>RENAULT Clio: 1GIC266</b>			
Vinnumber:	<b>VF15RJL0H50186495</b>	Versionname:	<b>CLIO IV BER e-Expression St&amp;St 90PK</b>
First Registrationdate:	<b>13/02/2014</b>	Fiscalpower:	
Expertise Mileage:	<b>156223</b>	Power Kw:	<b>66</b>
Bodytype:	<b>Hatchback</b>	Body color:	<b>Silver</b>
Gearbox:	<b>MAN 5 VIT</b>	Paint type:	<b>Metalic</b>
Transmission:	<b>Front</b>	Rims summer:	<b>Steel</b>
Fueltype:	<b>Diesel</b>	Oil level:	<b>OK</b>
Battery functioning:	<b>Yes</b>	Parking lot:	<b>3411</b>
Number of doors:	<b>5</b>		
Number of seats:	<b>4</b>		
Number head rests:	<b>4</b>		
Rims summer:	<b>Steel</b>		
Category:	<b>Passenger Car</b>		
Oil level:	<b>OK</b>		

<b>Options</b>	
GPS storage	<b>HD</b> Luggage cover
GPS storage	
Windows electric F	
Cruise Control	
Steering wheel multifunctional	
Radio multimedia	
Type of headlighting	<b>Headlighting Halogen</b>
Type of GPS	<b>GPS big screen color</b>
Type of Lining	<b>Lining fabrics</b>
Type of climate control	<b>Manual climate control</b>

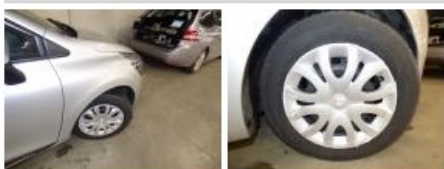
<b>Limited Technical Inspection</b>			
Power steering	<b>Yes</b>	Battery functioning	<b>Yes</b>
Airco functioning	<b>OK</b>	Sound engine	<b>OK</b>
Tires wear profile	<b>OK</b>	Clutch test	<b>OK</b>
Idle position	<b>OK</b>	Wiper fluid level	<b>OK</b>
Engine startingtime	<b>OK</b>	Lighting	<b>OK</b>
Exhaust gass	<b>OK</b>	Wiperblades	<b>OK</b>
Transmission	<b>OK</b>		
Handbrake	<b>OK</b>		

<b>Degree of wear</b>				
	<b>185/65/15/99 MS Steel</b>			
Winter tyres:	Fr.L.	<b>Semperit: 3 mm</b>	Fr.R.	<b>Semperit: 3 mm</b>
	Re.L.	<b>Semperit: 3 mm</b>	Re.R.	<b>Semperit: 3 mm</b>

<b>Assistance equipment</b>	
Total cost ex VAT	1265,78
Wheel cover F L, Scratch(es), E - Replace	24,00



Wheel cover F R, Damaged, E - Replace	24,00
---------------------------------------	-------



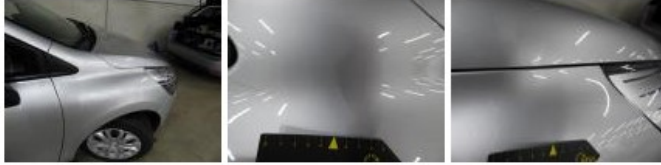
Wheel cover R R, Scratch(es), E - Replace	24,00
---	-------



Bumper R, Scratch(es), LI - Repair and paint (complete) 169,44



Wing F R, Scratch(es), LI - Repair and paint (complete) 176,14



Wing R R, Scratch(es), LI - Repair and paint (complete) 246,56



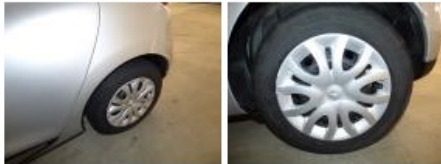
Front bumper, Scratch(es), LI - Repair and paint (complete) 169,44



Wing F L, Scratch(es), LI - Repair and paint (complete) 176,14



Wheel cover R L, Scratch(es), E - Replace 24,00



Bonnet, Scratch(es), LI - Repair and paint (complete) 232,06

