



VOLKSWAGEN GOLF VII: 1JVK333

| | | | |
|------------------------------------|--------------------------|--------------|-----------------------------------|
| Vinnumber: | WVWZZZAUZFP085093 | Versionname: | 1.6 TDI 77KW BMT TRENDLINE |
| First Registrationdate: | 5/03/2015 | Fiscalpower: | |
| Expertise Mileage: | 147134 | Power Kw: | 77 |
| Bodytype: | Hatchback | Body color: | Black |
| Gearbox: | MAN 5 VIT | Paint type: | Metalic |
| Transmission: | Front | Rims summer: | Steel |
| Fueltype: | Diesel | Oil level: | OK |
| Battery functioning: | Yes | Parking lot: | 3825 |
| Number of doors: | 5 | | |
| Number of seats: | 5 | | |
| Number head rests: | 5 | | |
| Rims summer: | Steel | | |
| Category: | Passenger Car | | |
| Oil level: | OK | | |
| Registration Certificate Car (BE): | Yes | | |

Options

| | | |
|--------------------------------|------------------------------|-----------------------|
| Radio CD | | Central consol F |
| GPS storage | | Luggage cover |
| GPS storage | SD | Front parking sensors |
| Windows electric F | | Rear parking sensors |
| Cruise Control | | |
| Steering wheel multifunctional | | |
| Type of headlighting | Headlighting Halogen | |
| Type of GPS | GPS big screen color | |
| Type of Lining | Lining fabrics | |
| Type of climate control | Autom climate control | |
| Adaptive cruise control | | |

Limited Technical Inspection

| | | | |
|---------------------|------------|---------------------|------------|
| Power steering | Yes | Battery functioning | Yes |
| Airco functioning | OK | Sound engine | OK |
| Tires wear profile | OK | Clutch test | OK |
| Idle position | OK | Wiper fluid level | OK |
| Engine startingtime | OK | Lighting | OK |
| Exhaust gass | OK | Wiperblades | OK |
| Transmission | OK | | |
| Handbrake | OK | | |

Degree of wear

| | | | | |
|---------------|-----------------------------|-----------------------|-------|-----------------------|
| | 195/65/15/91 T Steel | | | |
| Winter tyres: | Fr.L. | Michelin: 6 mm | Fr.R. | Michelin: 6 mm |
| | Re.L. | Michelin: 4 mm | Re.R. | Michelin: 4 mm |

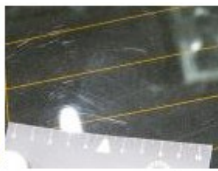
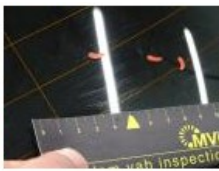
Assistance equipment

| | | | |
|-----------------------|------------|------|------------|
| Emergency spare wheel | Yes | Jack | Yes |
|-----------------------|------------|------|------------|

| | |
|---|---------|
| Total cost ex VAT | 1768,07 |
| Rear spoiler, Scratch(es), Acceptable | 0,00 |
| <i>No pictures to display</i> | |
| Wing R L, Bump(s) and scratch(es), Acceptable | 0,00 |
| <i>No pictures to display</i> | |
| Rearlight R , Scratch(es), 67 - Polish | 55,19 |



| | |
|---------------------------------------|------|
| Rear window, Scratch(es), E - Replace | 0,00 |
|---------------------------------------|------|



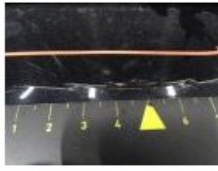
Door F R, Scratch(es), Acceptable 0,00

No pictures to display

Tailgate, Bump(s) and scratch(es), Acceptable 0,00

No pictures to display

Bumper R, Scratch(es), LI - Repair and paint (complete) 211,80



Wing F L, Scratch(es), Acceptable 0,00



Roof, Scratch(es), Acceptable 0,00

No pictures to display

Rear Panel Internal Lining, Scratch(es), Acceptable 0,00

No pictures to display

Wing R R, Scratch(es), Acceptable 0,00

No pictures to display

Bonnet, Chemical polution, LI - Repair and paint (complete) 290,08



Wing F R, Scratch(es), Acceptable 0,00

No pictures to display

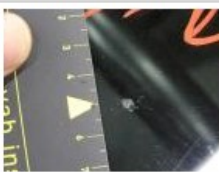
Wheel cover F L, Scratch(es), E - Replace 30,00

No pictures to display

Door R R, Scratch(es), Acceptable 0,00

No pictures to display

Windscreen, Stone chip(s), Windscreen repair 0,00



Roof pillar L, Scratch(es), Acceptable 0,00

No pictures to display

Rearlight L tailgate, Waterinfiltration, P - Check 0,00



Front bumper, Damaged, Le - Replace and paint 735,00



Headlight R, Scratch(es), E - Replace 396,00



Interior, Stain, Cleaning 50,00

