


**RENAULT Scenic: 1GKI375**

Vinnnumber:	<b>VF1JZ14K650186512</b>	Versionname:	<b>SCENIC Energy Life 110PK</b>
First Registrationdate:	<b>3/03/2014</b>	Fiscalpower:	
Expertise Mileage:	<b>113920</b>	Power Kw:	<b>81</b>
Bodytype:	<b>Hatchback</b>	Body color:	<b>Silver</b>
Gearbox:	<b>MAN 6 VIT</b>	Paint type:	<b>Metalic</b>
Transmission:	<b>Front</b>	Rims summer:	<b>Aluminium</b>
Fueltype:	<b>Diesel</b>	Oil level:	<b>OK</b>
Battery functioning:	<b>Yes</b>	Parking lot:	<b>2202</b>
Number of doors:	<b>5</b>		
Number of seats:	<b>5</b>		
Number head rests:	<b>5</b>		
Rims summer:	<b>Aluminium</b>		
Category:	<b>Passenger Car</b>		
Oil level:	<b>OK</b>		
Registration Certificate Car (BE):	<b>Yes</b>		

**Options**

Radio CD	Central consol F
Windows electric F	Luggage cover
Windows electric R	Rear parking sensors
Cruise Control	
Steering wheel multifunctional	
Radio multimedia	
Type of headlighting	<b>Headlighting Halogen</b>
Type of GPS	<b>GPS big screen color</b>
Type of Lining	<b>Lining fabrics</b>
Type of climate control	<b>Manual climate control</b>

**Limited Technical Inspection**

Power steering	<b>Yes</b>	Battery functioning	<b>Yes</b>
Airco functioning	<b>OK</b>	Sound engine	<b>OK</b>
Tires wear profile	<b>OK</b>	Clutch test	<b>OK</b>
Idle position	<b>OK</b>	Wiper fluid level	<b>OK</b>
Engine startingtime	<b>OK</b>	Lighting	<b>OK</b>
Exhaust gass	<b>OK</b>	Wiperblades	<b>OK</b>
Transmission	<b>OK</b>		
Handbrake	<b>OK</b>		

**Degree of wear**

	<b>205/60/16/92 H Steel</b>			
Winter tyres:	Fr.L.	<b>Kleber: 5 mm</b>	Fr.R.	<b>Kleber: 5 mm</b>
	Re.L.	<b>Kleber: 6 mm</b>	Re.R.	<b>Kleber: 6 mm</b>

**Assistance equipment**

Spare wheel	<b>Yes</b>	Jack	<b>Yes</b>
-------------	------------	------	------------

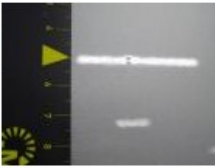
Total cost ex VAT	423,60
Bumper R, Scratch(es), LI - Repair and paint (complete)	211,80



Wing R L, Bump(s), Acceptable	0,00
<i>No pictures to display</i>	
Wing R L, Bad repair, Paint	0,00



Wing R R, Bad repair, Paint	0,00
-----------------------------	------



Front bumper, Scratch(es), LI - Repair and paint (complete)	211,80
---	--------

