



**VOLKSWAGEN Crafter 35 MWB hoog dak: 036APJ**

Vinnumber:	<b>WV1ZZZ2EZ96034742</b>	Versionname:	<b>CRAFTER 35 B/F MWB HR</b>
First Registrationdate:	<b>20/05/2009</b>	Fiscalpower:	<b>88pk</b>
Expertise Mileage:	<b>128287</b>	Power Kw:	<b>65</b>
Bodytype:	<b>Transporter</b>	Body color:	<b>Grey</b>
Gearbox:	<b>MAN 6 VIT</b>	Paint type:	<b>Metalic</b>
Transmission:	<b>Back</b>	Rims summer:	<b>Steel</b>
Fueltype:	<b>Diesel</b>	Oil level:	<b>OK</b>
Battery functioning:	<b>Yes</b>	Parking lot:	<b>2125</b>
Number of doors:	<b>5</b>		
Number of seats:	<b>3</b>		
Number head rests:	<b>3</b>		
Rims summer:	<b>Steel</b>		
Category:	<b>Light Commercial Vehicle</b>		
Oil level:	<b>OK</b>		

**Options**

Radio CD	Type of Tow bar	<b>Tow bar fixed</b>
Windows electric F		
Cruise Control		
Type of headlighting	<b>Headlighting Halogen</b>	
Type of Lining	<b>Lining artificial leather</b>	
Type of climate control	<b>Manual climate control</b>	

**Limited Technical Inspection**

Power steering	<b>Yes</b>	Battery functioning	<b>Yes</b>
Airco functioning	<b>OK</b>	Sound engine	<b>OK</b>
Tires wear profile	<b>OK</b>	Clutch test	<b>OK</b>
Idle position	<b>OK</b>	Wiper fluid level	<b>OK</b>
Engine startingtime	<b>OK</b>	Lighting	<b>OK</b>
Exhaust gass	<b>OK</b>	Wiperblades	<b>OK</b>
Transmission	<b>OK</b>		
Handbrake	<b>OK</b>		

**Degree of wear**

	<b>235/65/16/116 R Steel</b>			
Winter tyres:	Fr.L.	<b>Pirelli: 4,5 mm</b>	Fr.R.	<b>Pirelli: 4,5 mm</b>
	Re.L.	<b>Continental: 6,5 mm</b>	Re.R.	<b>Continental: 6,5 mm</b>

**Assistance equipment**

Spare wheel	<b>Yes</b>	Jack	<b>Yes</b>
-------------	------------	------	------------

<b>Total cost ex VAT</b>	<b>2782,04</b>
--------------------------	----------------

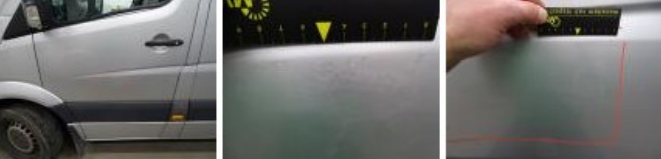
Trunk door R L, Bump(s), Acceptable	<b>0,00</b>
-------------------------------------	-------------

*No pictures to display*

Bodywork, Not original part, Acceptable	<b>0,00</b>
---	-------------

*No pictures to display*

Door F L, Scratch(es), LI - Repair and paint (complete)	<b>238,76</b>
---	---------------



Supplementary brake lights, Broken, E - Replace	<b>59,00</b>
---	--------------



Mirror side blinker B, Crack, E - Replace	<b>28,50</b>
---	--------------

mirror side blinker R, Crack, E - Replace 20,50



Bonnet, Bump(s), PDR - Knock out without painting 102,60



Bumper R, Scratch(es), Acceptable 0,00

No pictures to display

Steering wheel, Worn, Acceptable 0,00



Wing R R, Bump(s), PDR - Knock out without painting 87,00



Sill outer R, Scratch(es), LI - Repair and paint (complete) 232,88



Mirror side blinker L, Crack, E - Replace 89,00



Rearlight L, Crack, E - Replace 91,50



Wing trim R R, Scratch(es), E - Replace 69,00



Wing R L, Bump(s) and scratch(es), LI - Repair and paint (complete) 231,15



Wing R R, Accident, Le - Replace and paint 983,63



Door F R, Bump(s) and scratch(es), LI - Repair and paint (complete) 238,76



Trunk door R R, Scratch(es), Acceptable 0,00

*No pictures to display*

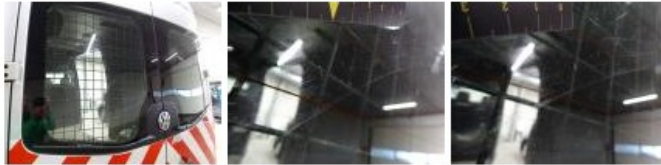
Door F R, Scratch(es), LI - Repair and paint (complete) 238,76



Rearlight R , Broken, E - Replace 91,50



Rear window, Scratch(es), E - Replace 0,00



Seat cover F L, Worn, Acceptable 0,00

