



BMW 1: 1GC553

Vinnnumber:	WBA1C91020J519878	Versionname:	1 HATCH 116d Eff.Dyn.Ed. 116PK
First Registrationdate:	2/01/2014	Fiscalpower:	
Expertise Mileage:	121584	Power Kw:	85
Bodytype:		Body color	Dark Blue
Gearbox:	MAN 6 VIT	Paint type	Metalic
Transmission:		Rims summer	Aluminium
Fueltype:	Diesel	Oil level	OK
Battery functioning	Yes	Parking lot	1614
Number of doors	5		
Number of seats	5		
Number head rests	5		
Rims summer	Aluminium		
Category	Passenger Car		
Oil level	OK		
Registration Certificate Car (BE)	Yes		

Options

Radio CD		Central consol F	
Windows electric F		Luggage cover	
Windows electric R		Rear parking sensors	
Cruise Control			
Steering wheel multifunctional			
Radio multimedia			
Type of headlighting	Headlighting Halogen		
Type of GPS	GPS big screen color		
Type of Lining	Lining fabrics		
Type of climate control	Manual climate control		

Limited Technical Inspection

Power steering	Yes	Battery functioning	Yes
Airco functioning	OK	Sound engine	OK
Tires wear profile	OK	Clutch test	OK
Idle position	OK	Wiper fluid level	OK
Engine startingtime	OK	Lighting	OK
Exhaust gass	OK	Wiperblades	OK
Transmission	OK		
Handbrake	OK		

Degree of wear

	205/55/16/91 V LightMetal			
Summer tyres:	Fr.L.	Bridgestone: 5 mm	Fr.R.	Bridgestone: 5 mm
	Re.L.	Continental: 7 mm	Re.R.	Continental: 7 mm

Assistance equipment

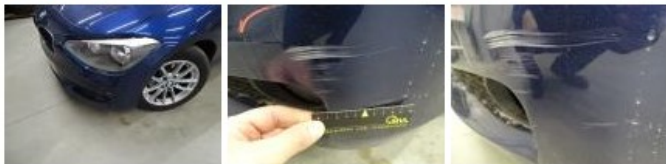
Repair kit	Yes	Compressor	Yes
------------	------------	------------	------------

Total cost ex VAT **616,20**

Interior, Dirty, Cleaning **50,00**



Front bumper, Scratch(es), LI - Repair and paint (complete) **211,80**



Roof, Hail damage, PDR - Hail

0,00



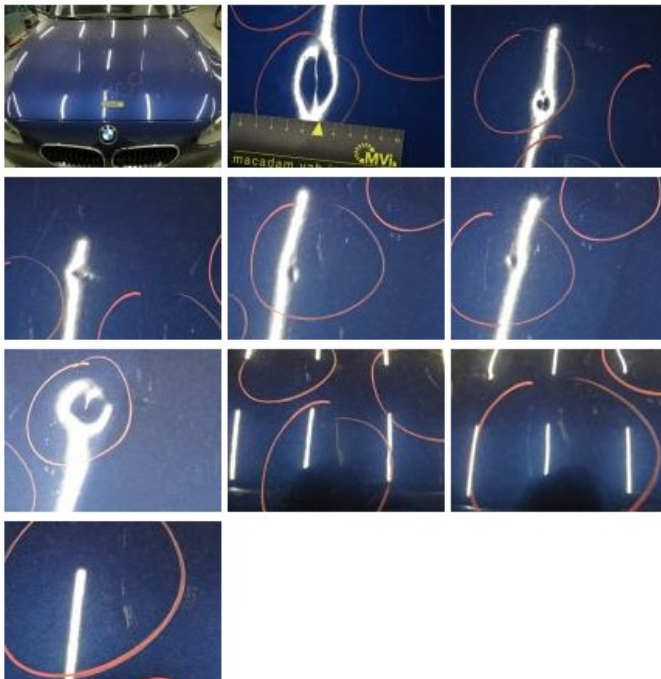
Backrest cover F L, Scratch(es), Smart repair

64,32



Bonnet, Stone chip(s), LI - Repair and paint (complete)

290,08



Bumper R, Scratch(es), Acceptable

0,00

No pictures to display