



**CITROEN JUMPER: 1EBF529**

Vinnumber:	<b>VF7YDDMFC11325144</b>	Versionname:	
First Registrationdate:	<b>25/01/2008</b>	Fiscalpower:	
Expertise Mileage:	<b>246795</b>	Power Kw:	<b>116</b>
Bodytype:	<b>Transporter</b>	Body color:	<b>Dark Grey</b>
Gearbox:	<b>MAN 6 VIT</b>	Paint type:	<b>Metalic</b>
Transmission:	<b>Front</b>	Rims summer:	<b>Steel</b>
Fueltype:	<b>Diesel</b>	Oil level:	<b>OK</b>
Battery functioning:	<b>Yes</b>	Parking lot:	<b>LCV10</b>
Number of doors:	<b>5</b>		
Number of seats:	<b>3</b>		
Number head rests:	<b>3</b>		
Rims summer:	<b>Steel</b>		
Category:	<b>Light Commercial Vehicle</b>		
Oil level:	<b>OK</b>		

**Options**

Radio CD	Type of Tow bar	<b>Tow bar fixed</b>
Windows electric F		
Type of headlighting	<b>Headlighting Halogen</b>	
Type of Lining	<b>Lining fabrics</b>	

**Limited Technical Inspection**

Power steering	<b>Yes</b>	Battery functioning	<b>Yes</b>
Tires wear profile	<b>OK</b>	Sound engine	<b>OK</b>
Idle position	<b>OK</b>	Clutch test	<b>OK</b>
Engine startingtime	<b>OK</b>	Wiper fluid level	<b>OK</b>
Exhaust gass	<b>OK</b>	Lighting	<b>OK</b>
Transmission	<b>OK</b>	Wiperblades	<b>OK</b>
Handbrake	<b>OK</b>		

**Degree of wear**

	<b>225/75/16/118 C Steel</b>			
Summer tyres:	Fr.L.	<b>Michelin: 3 mm</b>	Fr.R.	<b>Michelin: 3 mm</b>
	Re.L.	<b>Michelin: 4 mm</b>	Re.R.	<b>Michelin: 4 mm</b>

**Assistance equipment**

Emergency spare wheel	<b>Yes</b>	Jack	<b>Yes</b>
-----------------------	------------	------	------------

Total cost ex VAT	<b>1717,98</b>
-------------------	----------------

Sliding door R, Bad repair, Acceptable	<b>0,00</b>
--	-------------



Door F R, Repaired, Acceptable	<b>0,00</b>
--------------------------------	-------------

*No pictures to display*

Wing R L, Bump(s), LI - Repair and paint (complete)	<b>231,15</b>
---	---------------



Bonnet, Bump(s), LI - Repair and paint (complete)	<b>217,56</b>
---	---------------



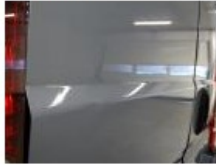
Headlight R, Stain, Acceptable	0,00
--------------------------------	------



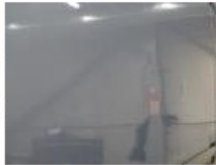
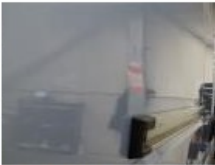
Sidewall RR (LCV), Bump(s) and scratch(es), It - Spot repair	115,56
--	--------



Tailgate, Bump(s) and scratch(es), LI - Repair and paint (complete)	362,02
---	--------



Wing R R, Bump(s), LI - Repair and paint (complete)	231,15
---	--------



Roof pillar R, Bump(s) and scratch(es), LI - Repair and paint (complete)	165,14
--	--------



Windscreen, Crack, E - Replace	395,40
--------------------------------	--------

